

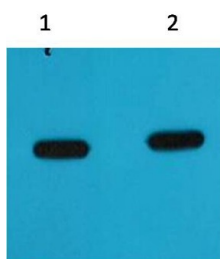
Anti-mCherry Antibody (5Z862)

Product Details

Conjugation:	Unconjugated
Clone:	5Z862
Purification:	Affinity purification using immunogen.

Applications

Verified Activity: 1. Western blot analysis of mCherry recombinant protein, using TMAC-02487 diluted at 1) 1:5,000 2) 1:10,000.



Application:	IP,WB
Recommended	WB: 1:5000-10000

Properties

Stability & Storage:	Store at -20°C or -80°C for 12 months. Avoid repeated freeze-thaw cycles.
Shipping:	Shipping with blue ice.

Antigen Details

Synonyms: monomeric cherry red fluorescent protein

Research Background

mCherry is a fluorophore (a fluorescent molecule) used in biotechnology as a tracer to follow the flow of fluids, as a marker when tagged to molecules and cells components. mCherry is a monomeric fluorescent construct with peak absorption/emission at 587 nm and 610 nm, respectively. It is resistant to photobleaching and is stable. mCherry is sometimes preferred to other fluorophores due to its colour, as well as its photostability compared to other monomeric fluorophores.

Inhibitor · Natural Compounds · Compound Libraries · Recombinant Proteins

This product is for Research Use Only. Not for Human or Veterinary or Therapeutic Use

Tel:781-999-4286 E_mail:info@targetmol.com Address:34 Washington Street,Wellesley Hills,MA 02481