

Anti-Mast Cell Tryptase Antibody (8D176)

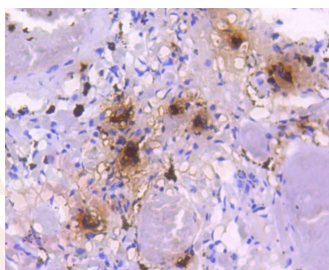
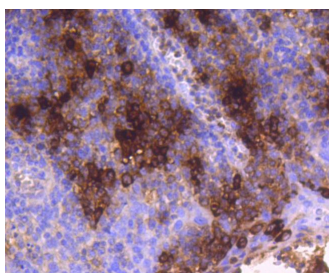
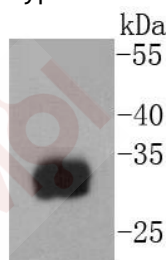
Product Details

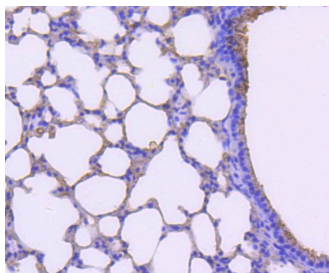
Ig Type:	IgG
Reactivity:	Human,Mouse,Rat
Conjugation:	Unconjugated
Molecular Weight:	Theoretical: 30 kDa.
Clone:	8D176
Purification:	ProA affinity purified

Applications

Verified Activity:

1. Western blot analysis of Mast Cell Tryptase on human skin lysates using anti-Mast Cell Tryptase antibody at 1/1,000 dilution.
2. Immunohistochemical analysis of paraffin-embedded human tonsil tissue using anti-Mast Cell Tryptase antibody. Counter stained with hematoxylin.
3. Immunohistochemical analysis of paraffin-embedded human lung tissue using anti-Mast Cell Tryptase antibody. Counter stained with hematoxylin.
4. Immunohistochemical analysis of paraffin-embedded mouse lung tissue using anti-Mast Cell Tryptase antibody. Counter stained with hematoxylin.





Application: IHC,IP,WB

Recommended WB: 1:1000-5000; IHC: 1:50-200

Properties

Stability & Storage: Store at -20°C or -80°C for 12 months. Avoid repeated freeze-thaw cycles.

Shipping: Shipping with blue ice.

Antigen Details

Immunogen: Recombinant Protein

Uniprot ID: Q15661

Synonyms: Tryptase alpha 1;Tryptase III;tryptase alpha/beta 1;Mast cell alpha II tryptase;alpha II;Lung tryptase;TPS 1;Tryptase beta 1;Skin tryptase;TPSB1;TPSAB1;Pituitary tryptase;tryptase I included;Tryptase I;TPS1;tryptase beta I included;Tryptase alpha II;tryptase alpha included;Tryptase 1;Mast cell protease 7;Mast cell protease II;tryptase alpha II included;Mast cell beta I tryptase;MCP 7;TPSAB1 protein;tryptase alpha I included;Tryptase skin;TPS2

Research Background

Mast cells are connective tissue cells derived from blood-forming tissues that line arterial walls and secrete substances, which mediate inflammatory and immune responses. Mast cell chymase, known as CMA1, is a major secreted serine protease that is involved in vasoactive peptide generation, extracellular matrix degradation and regulation of gland secretion. The human chymase gene, which maps to human chromosome 14q11.2, encodes a preproenzyme with a 19-amino acid signal peptide, an acidic 2-amino acid propeptide and a 226-amino acid catalytic domain. Tryptases comprise a family of trypsin-like serine proteases that are enzymatically active as heparin-stabilized tetramers. There are four functional genes for tryptase: α I, β I, β II and γ I, which map to human chromosome 16p13.3, with β tryptases representing the main isoenzymes expressed in mast cells. Mast cell proteases are a family of rodent protein homologs to human tryptases that are specifically expressed in mast cells and may serve as highly specific markers in the analysis of mast cell heterogeneity, differentiation and function.

Inhibitor · Natural Compounds · Compound Libraries · Recombinant Proteins

This product is for Research Use Only · Not for Human or Veterinary or Therapeutic Use

Tel:781-999-4286 E_mail:info@targetmol.com Address:34 Washington Street,Wellesley Hills,MA 02481
