

Anti-Chymase 1 Antibody (7I538)

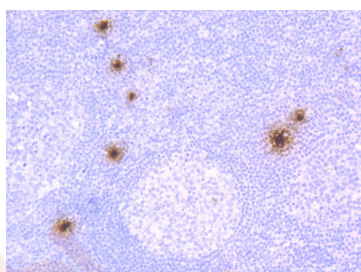
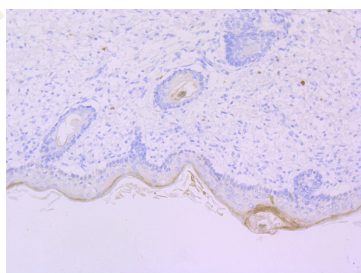
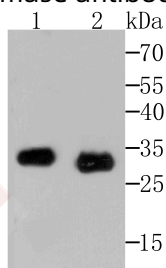
Product Details

Ig Type:	IgG
Reactivity:	Human
Conjugation:	Unconjugated
Molecular Weight:	Theoretical: 27 kDa.
Clone:	7I538
Purification:	ProA affinity purified

Applications

Verified Activity:

1. Western blot analysis of Mast Cell Chymase on rat spleen and mouse spleen tissue lysates using anti-Mast Cell Chymase antibody at 1/500 dilution.
2. Immunohistochemical analysis of paraffin-embedded human skin tissue using anti-Mast Cell Chymase antibody. Counter stained with hematoxylin.
3. Immunohistochemical analysis of paraffin-embedded human tonsil tissue using anti-Mast Cell Chymase antibody. Counter stained with hematoxylin.



Application: IHC,WB

Recommended WB: 1:500-2000; IHC: 1:50-200

Properties

Stability & Storage: Store at -20°C or -80°C for 12 months. Avoid repeated freeze-thaw cycles.

Shipping: Shipping with blue ice.

Antigen Details

Immunogen: Recombinant Protein

Uniprot ID: P23946

Synonyms: Mast cell protease I; Mast cell protease 5 (mMCP-5); Alpha-chymase; Chymase; Cma1; Mcpt5; Mast cell chymase 1

Research Background

Mast cells are connective tissue cells derived from blood-forming tissues that line arterial walls and secrete substances, which mediate inflammatory and immune responses. Mast Cell Chymase, also known as CMA1 or MCT1, is a major secreted serine protease that is involved in vasoactive peptide generation, extracellular matrix degradation and regulation of gland secretion. The human chymase gene, which maps to human chromosome 14q11.2, encodes a preproenzyme with a 19 amino acid signal peptide, an acidic 2 amino acid propeptide and a 226 amino acid catalytic domain. Mast Cell Chymase is a chymotryptic serine proteinase which is a member of the peptidase family S1. Expressed in mast cells, Mast Cell Chymase is associated with the degradation of the extracellular matrix, the regulation of submucosal gland secretion, and the generation of vasoactive peptides. Mast cell proteases are a family of rodent protein homologs to human tryptases that are specifically expressed in mast cells and may serve as highly specific markers in the analysis of mast cell heterogeneity, differentiation and function. Mast Cell Protease 1, also designated Mcp-1 or Mcpt1, is a rodent specific beta-chymase. The mouse and rat Mast Cell Protease 1 proteins share 76% sequence identity at the amino acid level.

Inhibitor · Natural Compounds · Compound Libraries · Recombinant Proteins

This product is for Research Use Only · Not for Human or Veterinary or Therapeutic Use

Tel: 781-999-4286 E_mail: info@targetmol.com Address: 34 Washington Street, Wellesley Hills, MA 02481