

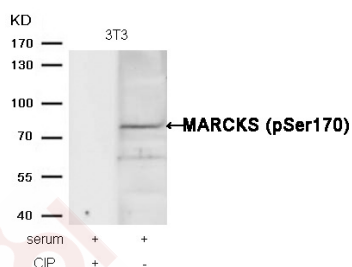
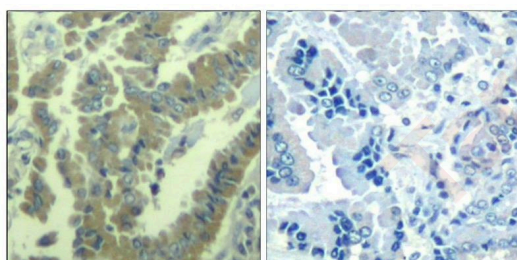
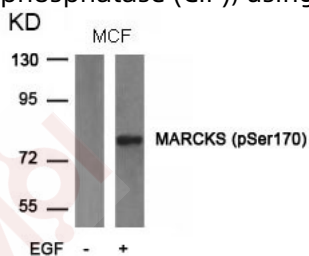
Anti-Phospho-MARCKS (Ser170) Polyclonal Antibody

Product Details

Ig Type:	IgG
Reactivity:	Human
Conjugation:	Unconjugated
Purification:	Antibodies were produced by immunizing rabbits with synthetic phosphopeptide and KLH conjugates. Antibodies were purified by affinity-chromatography using epitope-specific phosphopeptide. Non-phospho specific antibodies were removed by chromatography using non-phosphopeptide.

Applications

- Verified Activity:
- Western blot analysis of extracts from MCF cells untreated or treated with EGF using MARCKS (phospho-Ser170) Antibody TMAC-02475.
 - Immunohistochemical analysis of paraffin-embedded human lung carcinoma tissue using MARCKS (Phospho-Ser170) Antibody TMAC-02475 (left) or the same antibody preincubated with blocking peptide (right).
 - Western blot analysis of extracts from 3T3 cells, treated with serum or calf intestinal phosphatase (CIP), using MARCKS (phospho-Ser170) Antibody TMAC-02475.



Application: IHC,WB

Properties

Stability & Storage: Store at 2°C-8°C for 1 month. Store at -20°C or -80°C for 12 months. Avoid repeated freeze-thaw cycles.

Shipping: Shipping with blue ice.

Antigen Details

Immunogen: Peptide sequence around phosphorylation site of Serine 170 (G-F-S(p)-F-K) derived from Human MARCKS

Antigen Species: Human

Uniprot ID: P29966

Synonyms: MARCKS (p-Ser170);MARCKS (p-S170);p-MARCKS (S170);p-MARCKS (Ser170)

Research Background

MARCKS is the most prominent cellular substrate for protein kinase C. This protein binds calmodulin, actin, and synapsin. MARCKS is a filamentous (F) actin cross-linking protein.

Inhibitor · Natural Compounds · Compound Libraries · Recombinant Proteins

This product is for Research Use Only · Not for Human or Veterinary or Therapeutic Use

Tel:781-999-4286 E_mail:info@targetmol.com Address:34 Washington Street,Wellesley Hills,MA 02481