

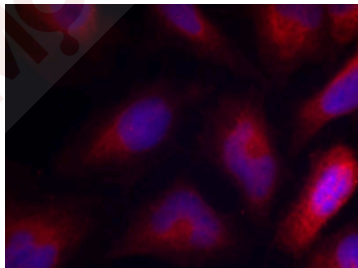
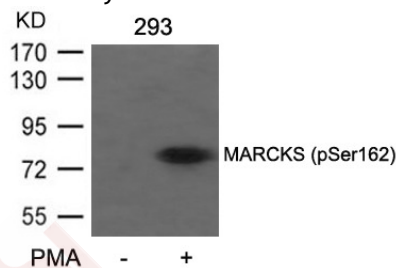
Anti-Phospho-MARCKS (Ser162) Polyclonal Antibody

Product Details

Ig Type:	IgG
Reactivity:	Human,Mouse,Rat
Conjugation:	Unconjugated
Purification:	Antibodies were produced by immunizing rabbits with synthetic phosphopeptide and KLH conjugates. Antibodies were purified by affinity-chromatography using epitope-specific phosphopeptide. Non-phospho specific antibodies were removed by chromatography using non-phosphopeptide.

Applications

- Verified Activity:
- Western blot analysis of extracts from 293 cells untreated or treated with PMA using MARCKS (Phospho-Ser162) Antibody TMAC-02474.
 - Immunofluorescence staining of methanol-fixed Hela cells using MARCKS (Phospho-Ser162) Antibody TMAC-02474.



Application: IF, WB

Properties

Stability & Storage:	Store at 2°C-8°C for 1 month. Store at -20°C or -80°C for 12 months. Avoid repeated freeze-thaw cycles.
Shipping:	Shipping with blue ice.

Antigen Details

Immunogen: Peptide sequence around phosphorylation site of serine 162 (K-K-S(p)-F-K) derived from Human MARCKS

Antigen Species: human

Uniprot ID: P29966

Synonyms: MARCKS (p-Ser162);MARCKS (p-S162);p-MARCKS (S162);p-MARCKS (Ser162)

Research Background

MARCKS is the most prominent cellular substrate for protein kinase C. This protein binds calmodulin, actin, and synapsin. MARCKS is a filamentous (F) actin cross-linking protein.

Inhibitor · Natural Compounds · Compound Libraries · Recombinant Proteins

This product is for Research Use Only · Not for Human or Veterinary or Therapeutic Use

Tel:781-999-4286 E_mail:info@targetmol.com Address:34 Washington Street,Wellesley Hills,MA 02481