

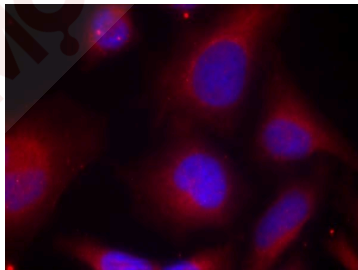
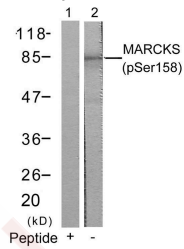
## Anti-Phospho-MARCKS (Ser158) Polyclonal Antibody

### Product Details

Ig Type:	IgG
Reactivity:	Human,Mouse,Rat
Conjugation:	Unconjugated
Purification:	Antibodies were produced by immunizing rabbits with synthetic phosphopeptide and KLH conjugates. Antibodies were purified by affinity-chromatography using epitope-specific phosphopeptide. Non-phospho specific antibodies were removed by chromatography using non-phosphopeptide.

### Applications

- Verified Activity:
- Western blot analysis of extracts from 3T3 cells using MARCKS (Phospho-Ser158) Antibody TMAC-02473 (Lane 2) and the same antibody preincubated with blocking peptide (Lane1).
  - Immunofluorescence staining of methanol-fixed Hela cells using MARCKS (Phospho-Ser158) Antibody TMAC-02473.



Application: IF,WB

### Properties

Stability & Storage:	Store at 2°C-8°C for 1 month. Store at -20°C or -80°C for 12 months. Avoid repeated freeze-thaw cycles.
Shipping:	Shipping with blue ice.

### Antigen Details

Immunogen: Peptide sequence around phosphorylation site of serine 158 (R-F-S(p)-F-K) derived from Human MARCKS

Antigen Species: Human

Uniprot ID: P29966

Synonyms: p-MARCKS (S158);MARCKS (p-S158);p-MARCKS (Ser158);MARCKS (p-Ser158)

---

### Research Background

MARCKS is the most prominent cellular substrate for protein kinase C. This protein binds calmodulin, actin, and synapsin. MARCKS is a filamentous (F) actin cross-linking protein.

**Inhibitor · Natural Compounds · Compound Libraries · Recombinant Proteins**

This product is for Research Use Only · Not for Human or Veterinary or Therapeutic Use

Tel:781-999-4286 E\_mail:info@targetmol.com Address:34 Washington Street,Wellesley Hills,MA 02481