

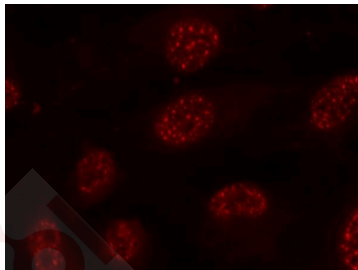
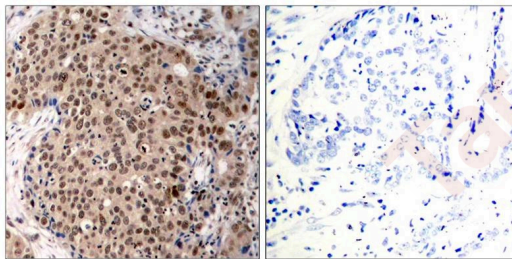
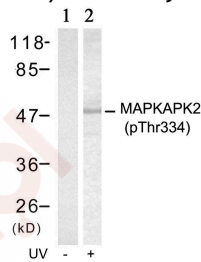
## Anti-Phospho-MAPKAPK2 (Thr334) Polyclonal Antibody

### Product Details

Ig Type:	IgG
Reactivity:	Human,Mouse,Rat
Conjugation:	Unconjugated
Purification:	Antibodies were produced by immunizing rabbits with synthetic phosphopeptide and KLH conjugates. Antibodies were purified by affinity-chromatography using epitope-specific phosphopeptide. Non-phospho specific antibodies were removed by chromatography using non-phosphopeptide.

### Applications

- Verified Activity:
1. Western blot analysis of extracts from Hela cells untreated (lane 1) or treated with UV (lane 2) using MAPKAPK-2 (Phospho-Thr334) Antibody TMAC-02469.
  2. Immunohistochemical analysis of paraffin-embedded human breast carcinoma tissue using MAPKAPK-2 (Phospho-Thr334) Antibody TMAC-02469 (left) or the same antibody preincubated with blocking peptide (right).
  3. Immunofluorescence staining of methanol-fixed Hela cells using MAPKAPK-2 (Phospho-Thr334) Antibody TMAC-02469.



Application: IF,IHC,WB

### Properties

**Stability & Storage:** Store at 2°C-8°C for 1 month. Store at -20°C or -80°C for 12 months. Avoid repeated freeze-thaw cycles.

**Shipping:** Shipping with blue ice.

---

### Antigen Details

**Immunogen:** Peptide sequence around phosphorylation site of threonine 334 (P-Q-T(p)-P-L) derived from Human MAPKAPK-2

**Antigen Species:** human

**Uniprot ID:** P49137

**Synonyms:** MAPKAPK2 (p-Thr334);p-MAPKAPK2 (T334);p-MAPKAPK2 (Thr334);MAPKAPK2 (p-T334)

---

### Research Background

MAPKAPK-2 encodes a member of the Ser/Thr protein kinase family. This kinase is regulated through direct phosphorylation by p38 MAP kinase. In conjunction with p38 MAP kinase, this kinase is known to be involved in many cellular processes including stress and inflammatory responses, nuclear export, gene expression regulation and cell proliferation. Heat shock protein HSP27 was shown to be one of the substrates of this kinase in vivo. Two transcript variants encoding two different isoforms have been found for this gene.

**Inhibitor · Natural Compounds · Compound Libraries · Recombinant Proteins**

This product is for Research Use Only · Not for Human or Veterinary or Therapeutic Use

Tel:781-999-4286 E\_mail:info@targetmol.com Address:34 Washington Street,Wellesley Hills,MA 02481