

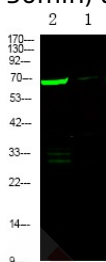
Anti-Phospho-Plastin-2 (Ser5) Polyclonal Antibody

Product Details

Ig Type:	IgG
Reactivity:	Human
Conjugation:	Unconjugated
Molecular Weight:	Theoretical: 70 kDa.
Purification:	Antibodies were produced by immunizing rabbits with synthetic phosphopeptide and KLH conjugates. Antibodies were purified by affinity-chromatography using epitope-specific phosphopeptide. Non-phospho specific antibodies were removed by chromatography using non-phosphopeptide.

Applications

Verified Activity: 1. Western Blot analysis of lysates of 1. K562 cell and 2. K562 cell treated with 100ng/mL LPS for 30min, using primary antibody at 1:1000 dilution.



Application: WB
Recommended WB: 1:1000

Properties

Stability & Storage: Store at -20°C or -80°C for 12 months. Avoid repeated freeze-thaw cycles.
Shipping: Shipping with blue ice.

Antigen Details

Immunogen: A synthesized phosphopeptide: human L-plastin around the phosphorylation site of Ser5
Antigen Species: human
Uniprot ID: P13796
Synonyms: p-Plastin-2 (Ser5);p-Plastin-2 (S5);Plastin-2 (p-S5);Plastin-2 (p-Ser5)

Inhibitor · Natural Compounds · Compound Libraries · Recombinant Proteins

This product is for Research Use Only. Not for Human or Veterinary or Therapeutic Use

Tel:781-999-4286 E_mail:info@targetmol.com Address:34 Washington Street,Wellesley Hills,MA 02481