

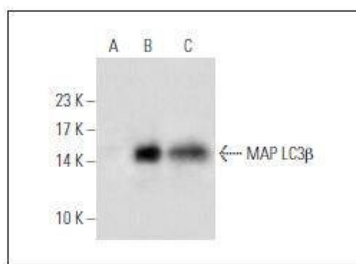
## Anti-LDHA Antibody (9P57)

## Product Details

Reactivity:	Human,Mouse
Conjugation:	Unconjugated
Molecular Weight:	Theoretical: 35 kDa.
Clone:	9P57
Purification:	ProA affinity purified

## Applications

Verified Activity: 1. Western blot analysis on A549 cell lysates using anti-LDH-A Mouse mAb.



Application:	IHC,WB
Recommended	WB: 1:500; IHC: 1:50

## Properties

Stability & Storage:	Store at -20°C or -80°C for 12 months. Avoid repeated freeze-thaw cycles.
Shipping:	Shipping with blue ice.

## Antigen Details

Immunogen:	Peptide
Uniprot ID:	P00338
Synonyms:	LDH-M;LDH Muscle Subunit;L-Lactate Dehydrogenase A Chain;LDHA;Cell Proliferation-Inducing Gene 19 Protein;Renal Carcinoma Antigen NY-REN-59;LDH-A

## Research Background

Lactate dehydrogenase (LDH) is an enzyme present in a wide variety of organisms, including plants and animals. It catalyses the interconversion of pyruvate and lactate with concomitant interconversion of NADH and NAD<sup>+</sup>. In medicine, LDH is often used as a marker of tissue breakdown as LDH is abundant in red blood cells and can function as a marker for hemolysis. In mammals, three types of LDH subunits (35 kDa) are encoded by the genes Ldh-A, Ldh-B, and Ldh-C. Lactate dehydrogenase B (LDH-B, heart subunit, LDH-H) is involved in the conversion of L-lactate and NAD to pyruvate and NADH and it is predominantly localized in the heart tissue. Similar to other LDH subunit, LDH-B is considered to be an important marker for germ cell tumor.

**Inhibitor · Natural Compounds · Compound Libraries · Recombinant Proteins**

This product is for Research Use Only · Not for Human or Veterinary or Therapeutic Use

Tel:781-999-4286 E\_mail:info@targetmol.com Address:34 Washington Street,Wellesley Hills,MA 02481