

Anti-MAP1LC3B Antibody (9I491)

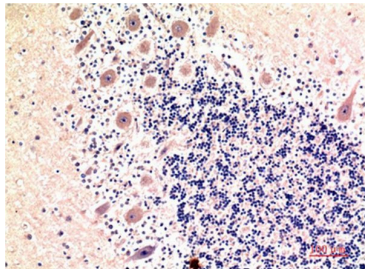
Product Details

Ig Type:	IgG1
Reactivity:	Human
Conjugation:	Unconjugated
Molecular Weight:	Theoretical: 14, 16 kDa.
Clone:	9I491

Applications

Verified Activity:

1. Immunohistochemical analysis of paraffin-embedded Human Brain Tissue using LC3B Mouse mAb diluted at 1:200.



Application:	IHC
Recommended	IHC: 1:100-200

Properties

Stability & Storage:	Store at -20°C or -80°C for 12 months. Avoid repeated freeze-thaw cycles.
Shipping:	Shipping with blue ice.

Antigen Details

Immunogen:	Recombinant Protein
Uniprot ID:	Q9GZQ8
Synonyms:	MAP1A/MAP1B light chain 3 B;Autophagy-related protein LC3 B;MAP1A/MAP1B LC3 B; Microtubule-associated protein 1 lig;MAP1 light chain 3-like protein 2;Microtubule-associated proteins 1A/1B light chain 3B;Autophagy-related ubiquitin-like modifier LC3 B

Inhibitor · Natural Compounds · Compound Libraries · Recombinant Proteins

This product is for Research Use Only. Not for Human or Veterinary or Therapeutic Use

Tel:781-999-4286 E_mail:info@targetmol.com Address:34 Washington Street,Wellesley Hills,MA 02481