

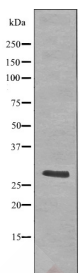
Anti-Phospho-LAT (Tyr255) Polyclonal Antibody

Product Details

Ig Type:	IgG
Reactivity:	Human,Mouse,Rat
Conjugation:	Unconjugated
Molecular Weight:	Theoretical: 28 kDa.
Purification:	Antibodies were produced by immunizing rabbits with synthetic phosphopeptide and KLH conjugates. Antibodies were purified by affinity-chromatography using epitope-specific phosphopeptide. Non-phospho specific antibodies were removed by chromatography using non-phosphopeptide.

Applications

Verified Activity: 1. Western blot analysis LAT (Phospho-Tyr255) using H2O2 treated 293 whole cell lysates.



Application: WB
Recommended WB: 1:1000

Properties

Stability & Storage: Store at -20°C or -80°C for 12 months. Avoid repeated freeze-thaw cycles.
Shipping: Shipping with blue ice.

Antigen Details

Immunogen: A synthesized phosphopeptide: human LAT around the phosphorylation site of Tyr255
Antigen Species: human
Uniprot ID: O43561
Synonyms: Linker for activation of T-cells family member 1;pp36;LAT (p-Tyr255);36 kDa phospho-tyrosine adapter protein;p36-38;Phospho-LAT (Y255);LAT (p-Y255);p-LAT (Tyr255);p-LAT (Y255)

Inhibitor · Natural Compounds · Compound Libraries · Recombinant Proteins

This product is for Research Use Only. Not for Human or Veterinary or Therapeutic Use

Tel:781-999-4286 E_mail:info@targetmol.com Address:34 Washington Street,Wellesley Hills,MA 02481