

Anti-EZH2 Antibody (5A657)

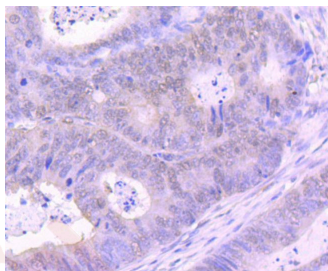
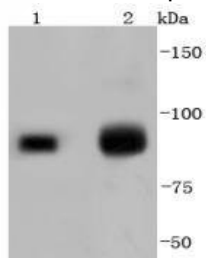
Product Details

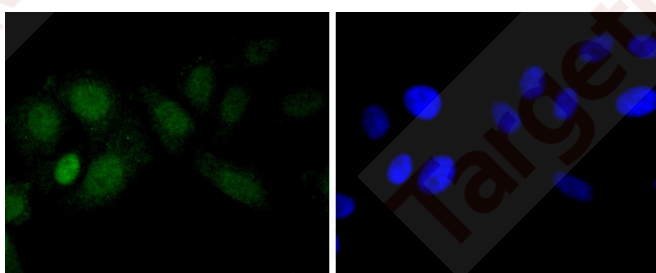
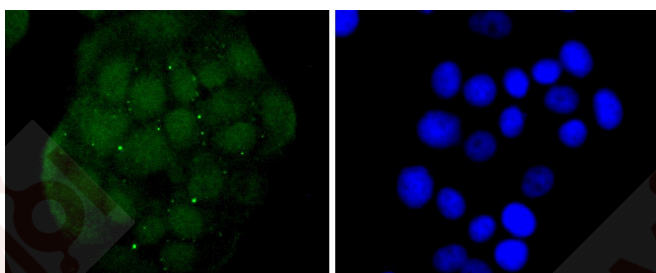
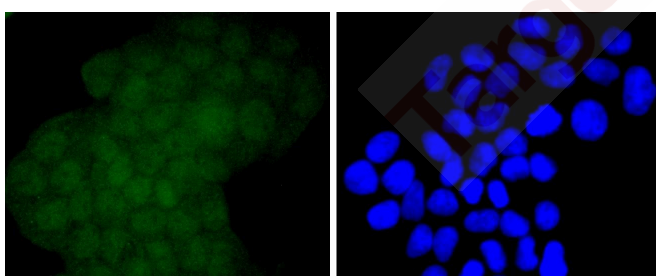
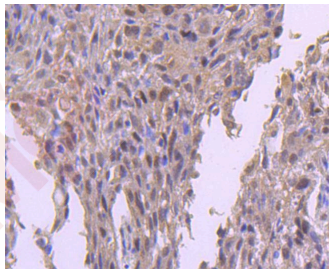
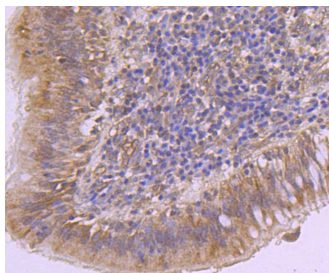
Ig Type:	IgG
Reactivity:	Human
Conjugation:	Unconjugated
Molecular Weight:	Theoretical: 86 kDa.
Clone:	5A657
Purification:	ProA affinity purified

Applications

Verified Activity:

1. Western blot analysis of KMT6/EZH2 on different lysates using anti-KMT6/EZH2 antibody at 1/1,000 dilution. Positive control: Lane 1: 293T, Lane 2: 293.
2. Immunohistochemical analysis of paraffin-embedded human colon cancer tissue using anti-KMT6/EZH2 antibody. Counter stained with hematoxylin.
3. Immunohistochemical analysis of paraffin-embedded human lung cancer tissue using anti-KMT6/EZH2 antibody. Counter stained with hematoxylin.
4. Immunohistochemical analysis of paraffin-embedded human breast carcinoma tissue using anti-KMT6/EZH2 antibody. Counter stained with hematoxylin.
5. ICC staining KMT6/EZH2 in Hela cells (green). The nuclear counter stain is DAPI (blue). Cells were fixed in paraformaldehyde, permeabilised with 0.25% Triton X100/PBS.
6. ICC staining KMT6/EZH2 in MCF-7 cells (green). The nuclear counter stain is DAPI (blue). Cells were fixed in paraformaldehyde, permeabilised with 0.25% Triton X100/PBS.
7. ICC staining KMT6/EZH2 in HepG2 cells (green). The nuclear counter stain is DAPI (blue). Cells were fixed in paraformaldehyde, permeabilised with 0.25% Triton X100/PBS.





Application: ICC/IF,IHC,WB

Recommended WB: 1:1000-2000; IHC: 1:50-200; ICC/IF: 1:50-200

Properties

Stability & Storage: Store at -20°C or -80°C for 12 months. Avoid repeated freeze-thaw cycles.

Shipping: Shipping with blue ice.

Antigen Details

Immunogen:	Recombinant Protein
Uniprot ID:	Q15910
Synonyms:	KMT6;ENX-1;EZH 2;EC 2.1.1.43;Histone-lysine N-methyltransferase EZH2;Lysine N-methyltransferase 6;Enhancer of zeste homolog 2

Research Background

In *Drosophila*, the Polycomb (PcG) gene family encodes chromatin proteins that are required for the repression of homeotic loci in embryonic development. PcG proteins work in conjunction with the trithorax-group (trxG), which activate homeobox gene expression during embryonic development. ENX-1, a mammalian homolog of the *Drosophila* gene enhancer of zeste, is a PcG protein that is ubiquitously expressed during early embryogenesis and becomes restricted to the central and peripheral nervous systems and sites of fetal hematopoiesis during later development. In the adult, ENX-1 is restricted to specific sites, including spleen, testis and placenta. The gene encoding human ENX-1 transcribes a 746 amino acid polypeptide which contains a trithorax-like domain and a DNA-binding motif. ENX-1 interacts with the proto-oncogene product Vav and is thought to be involved in the proliferation of normal and malignant hematopoietic cells. By altering the regulation of target genes, ENX-1 may also contribute to certain phenotypes of Down syndrome.

Inhibitor · Natural Compounds · Compound Libraries · Recombinant Proteins

This product is for Research Use Only · Not for Human or Veterinary or Therapeutic Use

Tel:781-999-4286 E_mail:info@targetmol.com Address:34 Washington Street,Wellesley Hills,MA 02481