

Anti-GJB2 Antibody (8X956)

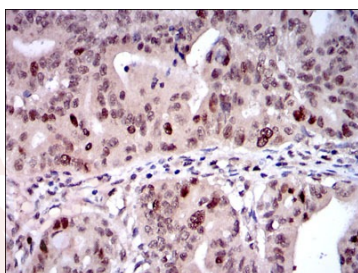
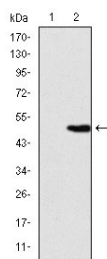
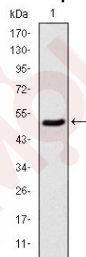
Product Details

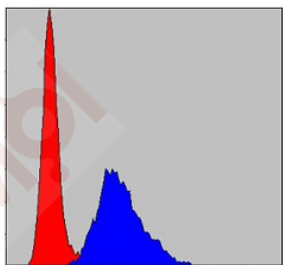
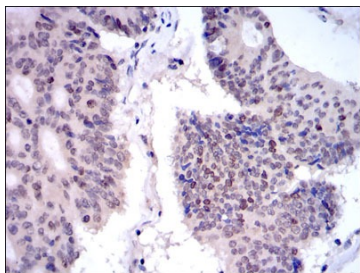
| | |
|-------------------|------------------------|
| Reactivity: | Human |
| Conjugation: | Unconjugated |
| Molecular Weight: | Theoretical: 73 kDa. |
| Clone: | 8X956 |
| Purification: | ProA affinity purified |

Applications

Verified Activity:

1. Western blot analysis of KIF22 on human KIF22 recombinant protein using anti- KIF22 antibody at 1/1,000 dilution.
2. Western blot analysis of KIF22 on HEK293 (1) and KIF22-hlgGfc transfected HEK293 (2) cell lysate using anti- KIF22 antibody at 1/1,000 dilution.
3. Immunohistochemical analysis of paraffin-embedded human rectum cancer tissue using anti- KIF22 antibody. Counter stained with hematoxylin.
4. Immunohistochemical analysis of paraffin-embedded human colon cancer tissue using anti- KIF22 antibody. Counter stained with hematoxylin.
5. Flow cytometric analysis of NIH/3T3 cells with KIF22 antibody at 1/100 dilution (blue) compared with an unlabelled control (cells without incubation with primary antibody; red).





Application: FCM,IHC,WB
Recommended WB: 1:500-1000; IHC: 1:100-500; FCM: 1:100-200

Properties

Stability & Storage: Store at -20°C or -80°C for 12 months. Avoid repeated freeze-thaw cycles.
Shipping: Shipping with blue ice.

Antigen Details

Immunogen: Recombinant Protein
Uniprot ID: Q14807
Synonyms: Connexin-26;GJB 2;NSRD1;CXB2;HID;KID;Cx26;PPK;DFNB1;DFNA3;connexin 26;Gap junction beta-2 protein

Inhibitor · Natural Compounds · Compound Libraries · Recombinant Proteins

This product is for Research Use Only · Not for Human or Veterinary or Therapeutic Use

Tel:781-999-4286 E_mail:info@targetmol.com Address:34 Washington Street,Wellesley Hills,MA 02481
