

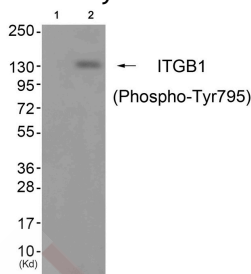
Anti-Phospho-ITGB1 (Tyr795) Polyclonal Antibody

Product Details

| | |
|-------------------|--|
| Ig Type: | IgG |
| Reactivity: | Human,Mouse,Rat |
| Conjugation: | Unconjugated |
| Molecular Weight: | Actual: 140 kDa. |
| Purification: | Antibodies were produced by immunizing rabbits with synthetic phosphopeptide and KLH conjugates. Antibodies were purified by affinity-chromatography using epitope-specific phosphopeptide. Non-phospho specific antibodies were removed by chromatography using non-phosphopeptide. |

Applications

Verified Activity: 1. Western blot analysis of extracts from cos-7 cells (Lane 2), using ITGB1 (Phospho-Tyr795) Antibody TMAC-02248. The lane on the left is treated with antigen-specific peptide.



| | |
|--------------|----------------|
| Application: | WB |
| Recommended | WB: 1:500-1000 |

Properties

| | |
|----------------------|---|
| Stability & Storage: | Store at -20°C or -80°C for 12 months. Avoid repeated freeze-thaw cycles. |
| Shipping: | Shipping with blue ice. |

Antigen Details

| | |
|------------------|---|
| Immunogen: | Peptide sequence around phosphorylation site of tyrosine 795(P-K-Y(p)-E-G) derived from Human ITGB1 |
| Antigen Species: | Human |
| Uniprot ID: | P05556 |
| Synonyms: | ITGB1 (p-Y795);ITGB1 (p-Tyr795);p-ITGB1 (Tyr795);p-ITGB1 (Y795) |

Research Background

Integrins are heterodimeric proteins made up of alpha and beta subunits. At least 18 alpha and 8 beta subunits have been described in mammals. Integrin family members are membrane receptors involved in cell adhesion and recognition in a variety of processes including embryogenesis, hemostasis, tissue repair, immune response and metastatic diffusion of tumor cells. This gene encodes a beta subunit. Multiple alternatively spliced transcript variants which encode different protein isoforms have been found for this gene.

Inhibitor · Natural Compounds · Compound Libraries · Recombinant Proteins

This product is for Research Use Only · Not for Human or Veterinary or Therapeutic Use

Tel:781-999-4286 E_mail:info@targetmol.com Address:34 Washington Street,Wellesley Hills,MA 02481