

Anti-ISL1 Antibody (8S951)

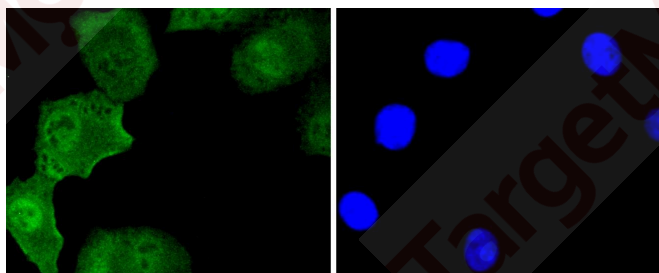
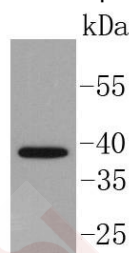
Product Details

Ig Type:	IgG
Reactivity:	Human,Mouse
Conjugation:	Unconjugated
Molecular Weight:	Theoretical: 39 kDa.
Clone:	8S951
Purification:	ProA affinity purified

Applications

Verified Activity:

1. Western blot analysis of Islet 1 on MCF-7 cell lysates using anti-Islet 1 antibody at 1/1,000 dilution.
2. ICC staining Islet 1 in A549 cells (green). The nuclear counter stain is DAPI (blue). Cells were fixed in paraformaldehyde, permeabilised with 0.25% Triton X100/PBS.



Application:	ICC/IF,IP,WB
Recommended	WB: 1:1000; ICC/IF: 1:50-200

Properties

Stability & Storage: Store at -20°C or -80°C for 12 months. Avoid repeated freeze-thaw cycles.

Shipping: Shipping with blue ice.

Antigen Details

Immunogen: Recombinant Protein
Uniprot ID: P61371
Synonyms: Islet-1; ISL 1; Insulin gene enhancer protein ISL-1

Research Background

Islet-1 (ISL1 transcription factor, LIM/homeodomain) and Islet-2 (ISL2 transcription factor, LIM/homeodomain) contain amino-terminal LIM domains and a carboxy-terminal homeodomain and both influence developmental events. Islet-1 influences embryogenesis of the pancreatic islets of Langerhans and neural tube motor neuron differentiation. In developing mouse teeth, Islet-1 mediates patterning of dentition as an activator of Bmp4 expression in incisor (distal) areas of the stomatodeal epithelium. Islet-1 expression defines cardiac progenitor cell populations and is required for normal cardiac development and asymmetry. Islet-2 activity in newly generated motor neurons permits the diversification of visceral and somatic motor neuron subtypes in the developing spinal cord. Murine Islet-2 specifies retinal ganglion cell (RGC) laterality by repressing an ipsilateral pathfinding program unique to the ventral-temporal crescent (VTC) of RGCs in a Zic2- and EphB1-dependent manner.

Inhibitor · Natural Compounds · Compound Libraries · Recombinant Proteins

This product is for Research Use Only · Not for Human or Veterinary or Therapeutic Use

Tel: 781-999-4286 E_mail: info@targetmol.com Address: 34 Washington Street, Wellesley Hills, MA 02481