

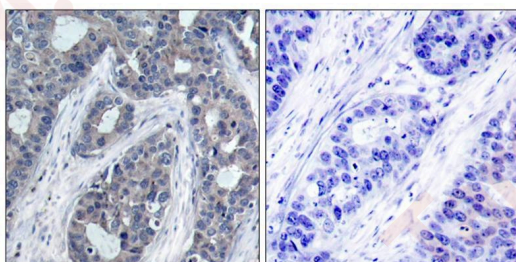
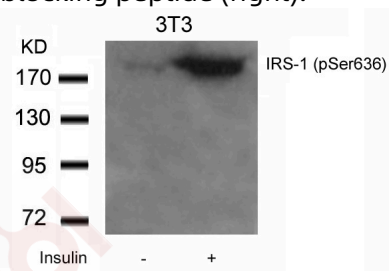
## Anti-Phospho-IRS-1 (Ser636) Polyclonal Antibody

### Product Details

Ig Type:	IgG
Reactivity:	Human,Mouse,Rat
Conjugation:	Unconjugated
Purification:	Antibodies were produced by immunizing rabbits with synthetic phosphopeptide and KLH conjugates. Antibodies were purified by affinity-chromatography using epitope-specific phosphopeptide. Non-phospho specific antibodies were removed by chromatography using non-phosphopeptide.

### Applications

- Verified Activity:
- Western blot analysis of extracts from 3T3 cells untreated or treated with Insulin using IRS-1 (Phospho-Ser636) Antibody TMAC-02243.
  - Immunohistochemical analysis of paraffin-embedded human breast carcinoma tissue using IRS-1 (Phospho-Ser636) Antibody TMAC-02243 (left) or the same antibody preincubated with blocking peptide (right).



Application: IHC,WB

### Properties

Stability & Storage: Store at -20°C or -80°C for 12 months. Avoid repeated freeze-thaw cycles.

Shipping: Shipping with blue ice.

### Antigen Details

Immunogen:	Peptide sequence around phosphorylation site of serine 636 (P-M-S(p)-P-K) derived from Human IRS-1
Antigen Species:	Human
Uniprot ID:	P35568
Synonyms:	p-IRS1 (S636);IRS1 (p-S636);IRS-1;Insulin receptor substrate 1;IRS1 (p-Ser636);p-IRS1 (Ser636)

### Research Background

May mediate the control of various cellular processes by insulin. When phosphorylated by the insulin receptor binds specifically to various cellular proteins containing SH2 domains such as phosphatidylinositol 3-kinase p85 subunit or GRB2. Activates phosphatidylinositol 3-kinase when bound to the regulatory p85 subunit

**Inhibitor · Natural Compounds · Compound Libraries · Recombinant Proteins**

This product is for Research Use Only · Not for Human or Veterinary or Therapeutic Use

Tel:781-999-4286 E\_mail:info@targetmol.com Address:34 Washington Street,Wellesley Hills,MA 02481