

## Anti-Phospho-IRS-1 (Ser312) Polyclonal Antibody

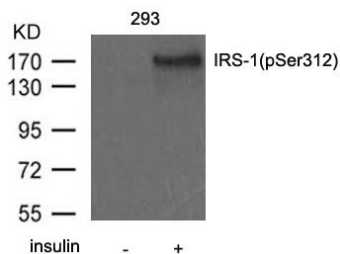
## Product Details

Ig Type:	IgG
Reactivity:	Human,Mouse,Rat
Conjugation:	Unconjugated
Purification:	Antibodies were produced by immunizing rabbits with synthetic peptide and KLH conjugates. Antibodies were purified by affinity-chromatography using epitope-specific peptide.

## Applications

## Verified Activity:

1. Western blot analysis of extract from 293 cells untreated or treated with insulin using IRS-1 (Phospho-Ser312) antibody TMAC-02242.



Application: WB

## Properties

Stability & Storage: Store at -20°C or -80°C for 12 months. Avoid repeated freeze-thaw cycles.

Shipping: Shipping with blue ice.

## Antigen Details

Immunogen: Peptide sequence around phosphorylation site of serine 312 (A-T-S(p)-P-A) derived from Human IRS-1

Antigen Species: Human

Uniprot ID: P35568

Synonyms: p-IRS1 (S312);p-IRS1 (Ser312);Insulin receptor substrate 1;IRS1 (p-S312);IRS-1;IRS1 (p-Ser312)

## Research Background

May mediate the control of various cellular processes by insulin. When phosphorylated by the insulin receptor binds specifically to various cellular proteins containing SH2 domains such as phosphatidylinositol 3-kinase p85 subunit or GRB2. Activates phosphatidylinositol 3-kinase when bound to the regulatory p85 subunit

**Inhibitor · Natural Compounds · Compound Libraries · Recombinant Proteins**

This product is for Research Use Only. Not for Human or Veterinary or Therapeutic Use

Tel:781-999-4286 E\_mail:info@targetmol.com Address:34 Washington Street,Wellesley Hills,MA 02481