

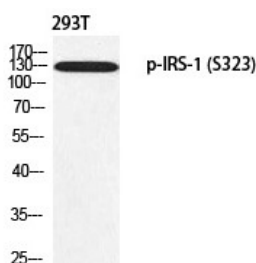
## Anti-Phospho-IRS-1 (Ser323) Polyclonal Antibody

## Product Details

Ig Type:	IgG
Reactivity:	Human,Mouse,Rat,Monkey
Conjugation:	Unconjugated
Molecular Weight:	Actual: 135 kDa.
Purification:	The antibody was affinity-purified from rabbit antiserum by affinity-chromatography using epitope-specific immunogen.

## Applications

Verified Activity: 1. Western blot analysis of 293T using p-IRS-1 (S323) antibody.



Application:	ELISA,IF,IHC,WB
Recommended	WB: 1:500-2000; IHC: 1:100-300; IF: 1:200-1000; ELISA: 1:10000

## Properties

Stability & Storage:	Store at -20°C or -80°C for 12 months. Avoid repeated freeze-thaw cycles.
Shipping:	Shipping with blue ice.

## Antigen Details

Immunogen:	A synthesized phosphopeptide: human IRS-1 around the phosphorylation site of S323
Antigen Species:	Human
Uniprot ID:	P35568
Synonyms:	IRS-1;Insulin receptor substrate 1;p-IRS1 (Ser323);IRS1 (p-Ser323);IRS1 (p-S323);p-IRS1 (S323)

**Inhibitor · Natural Compounds · Compound Libraries · Recombinant Proteins**

This product is for Research Use Only. Not for Human or Veterinary or Therapeutic Use

Tel:781-999-4286 E\_mail:info@targetmol.com Address:34 Washington Street,Wellesley Hills,MA 02481