

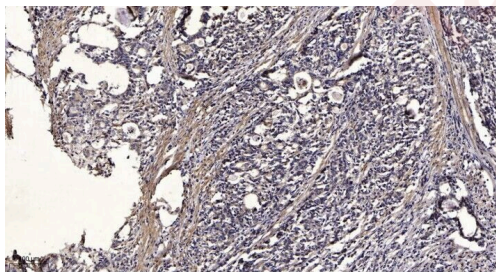
Anti-Phospho-IRF7 (Ser471, 472) Polyclonal Antibody 2

Product Details

| | |
|-------------------|-----------------------------------------------------------------------------------------------------------|
| Ig Type: | IgG |
| Reactivity: | Human,Mouse,Rat |
| Conjugation: | Unconjugated |
| Molecular Weight: | Actual: 55 kDa. |
| Purification: | The antibody was affinity-purified from rabbit serum by affinity-chromatography using specific immunogen. |

Applications

Verified Activity: 1. Immunohistochemical analysis of paraffin-embedded human Gastric adenocarcinoma.



| | |
|--------------|--------------------------------|
| Application: | IHC,WB |
| Recommended | WB: 1:1000-2000; IHC: 1:50-300 |

Properties

| | |
|----------------------|---------------------------------------------------------------------------|
| Stability & Storage: | Store at -20°C or -80°C for 12 months. Avoid repeated freeze-thaw cycles. |
| Shipping: | Shipping with blue ice. |

Antigen Details

| | |
|------------------|---------------------------------------------------------------------------------------------|
| Immunogen: | A synthesized phosphopeptide: human IRF-7 around the phosphorylation site of Ser471 and 472 |
| Antigen Species: | Human |
| Uniprot ID: | Q92985 |
| Synonyms: | IRF7 (p-S471, 472);IRF7 (p-Ser471, 472);p-IRF7 (S471, 472);p-IRF7 (Ser471, 472) |

Research Background

interferon regulatory factor 7(IRF7) Homo sapiens IRF7 encodes interferon regulatory factor 7, a member of the interferon regulatory transcription factor (IRF) family. IRF7 has been shown to play a role in the transcriptional activation of virus-inducible cellular genes, including interferon beta chain genes. Inducible expression of IRF7 is largely restricted to lymphoid tissue. Multiple IRF7 transcript variants have been identified, although the functional consequences of these have not yet been established. [provided by RefSeq, Jul 2008],

Inhibitor · Natural Compounds · Compound Libraries · Recombinant Proteins

This product is for Research Use Only · Not for Human or Veterinary or Therapeutic Use

Tel:781-999-4286 E_mail:info@targetmol.com Address:34 Washington Street,Wellesley Hills,MA 02481