

## Anti-IRF5 Antibody (6F756)

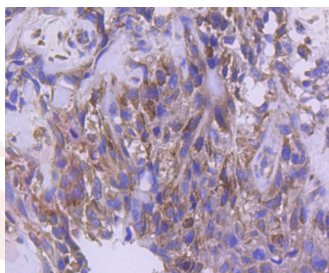
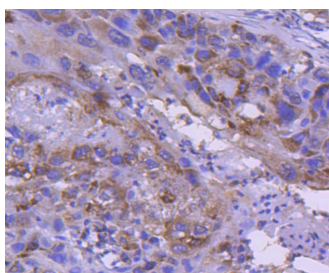
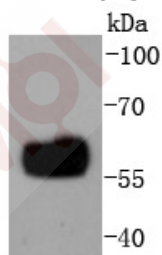
### Product Details

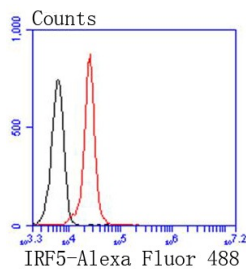
Ig Type:	IgG
Reactivity:	Human
Conjugation:	Unconjugated
Molecular Weight:	Theoretical: 56 kDa.
Clone:	6F756
Purification:	ProA affinity purified

### Applications

#### Verified Activity:

1. Western blot analysis of IRF5 on THP-1 cells lysates using anti-IRF5 antibody at 1/1,000 dilution.
2. Immunohistochemical analysis of paraffin-embedded human lung cancer tissue using anti-IRF5 antibody. Counter stained with hematoxylin.
3. Immunohistochemical analysis of paraffin-embedded human breast carcinoma tissue using anti-IRF5 antibody. Counter stained with hematoxylin.
4. Flow cytometric analysis of K562 cells with IRF5 antibody at 1/50 dilution (red) compared with an unlabelled control (cells without incubation with primary antibody; black). Alexa Fluor 488-conjugated goat anti rabbit IgG was used as the secondary antibody.





Application: FCM,IHC,WB

Recommended WB: 1:1000-5000; IHC: 1:50-200; FCM: 1:50-100

---

### Properties

Stability & Storage: Store at -20°C or -80°C for 12 months. Avoid repeated freeze-thaw cycles.

Shipping: Shipping with blue ice.

---

### Antigen Details

Immunogen: Recombinant Protein

Uniprot ID: Q13568

Synonyms: IRF-5;IRF5;Interferon Regulatory Factor 5

---

### Research Background

Interferon regulatory factor 5 (IRF-5), belongs to the IRF family of DNA-binding factors, which includes IRF-1, IRF-2, IRF-3, IRF-4, IRF-6, IRF-7, ISGF-3γ p48 and IFN consensus sequence-binding protein (ICSBP). The IRF family regulate both interferon and interferon-inducible genes. IRF-5, like IRF-3 and IRF-7, is a direct transducer of virus-mediated signaling and plays a role in the expression of multiple cytokines/chemokines. Although IRF-5 is a direct target of p53, its cell cycle regulatory and proapoptotic effects are p53 independent.

**Inhibitor · Natural Compounds · Compound Libraries · Recombinant Proteins**

This product is for Research Use Only. Not for Human or Veterinary or Therapeutic Use

Tel:781-999-4286 E\_mail:info@targetmol.com Address:34 Washington Street,Wellesley Hills,MA 02481

---