

Anti-Phospho-IRF3 (Ser396) Polyclonal Antibody 2

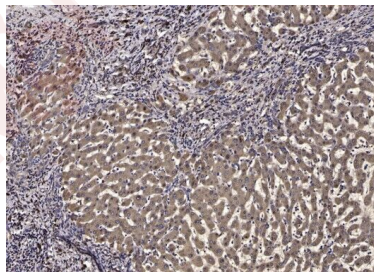
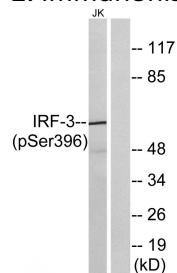
Product Details

Ig Type:	IgG
Reactivity:	Human,Mouse,Rat
Conjugation:	Unconjugated
Molecular Weight:	Actual: 48-55 kDa.
Purification:	The antibody was affinity-purified from rabbit antiserum by affinity-chromatography using epitope-specific immunogen.

Applications

Verified Activity:

1. Western blot analysis of lysates from Jurkat cells treated with EGF 200ng/ml 30', using IRF-3 (Phospho-Ser396) Antibody. The lane on the right is blocked with the phospho peptide.
2. Immunohistochemical analysis of paraffin-embedded human liver cancer.



Application:	ELISA,IHC,WB
Recommended	WB: 1:500-2000; IHC-p 1:50-300ELISA: 1:20000

Properties

Stability & Storage:	Store at -20°C or -80°C for 12 months. Avoid repeated freeze-thaw cycles.
Shipping:	Shipping with blue ice.

Antigen Details

Immunogen: A synthesized phosphopeptide: human IRF-3 around the phosphorylation site of Ser396. AA range:362-411

Antigen Species: Human

Uniprot ID: Q14653

Synonyms: p-IRF3 (S396);IRF3 (p-S396);IRF3 (p-Ser396);p-IRF3 (Ser396)

Research Background

interferon regulatory factor 3(IRF3) Homo sapiens This gene encodes a member of the interferon regulatory transcription factor (IRF) family. The encoded protein is found in an inactive cytoplasmic form that upon serine/threonine phosphorylation forms a complex with CREBBP. This complex translocates to the nucleus and activates the transcription of interferons alpha and beta, as well as other interferon-induced genes. Alternatively spliced transcript variants encoding multiple isoforms have been observed for this gene. [provided by RefSeq, Nov 2011],

Inhibitor · Natural Compounds · Compound Libraries · Recombinant Proteins

This product is for Research Use Only · Not for Human or Veterinary or Therapeutic Use

Tel:781-999-4286 E_mail:info@targetmol.com Address:34 Washington Street,Wellesley Hills,MA 02481