

Anti-IDE Antibody (5U690)

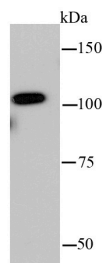
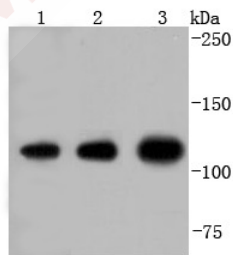
Product Details

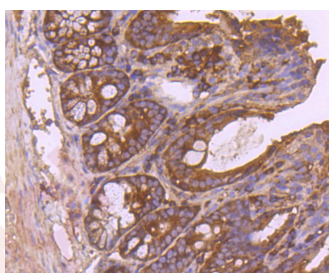
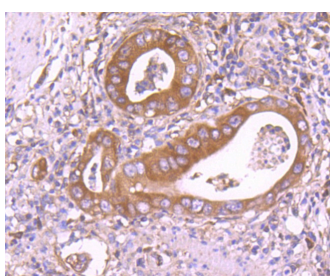
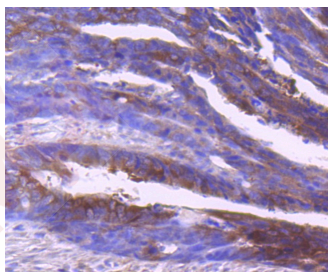
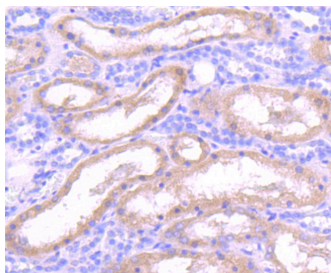
Ig Type:	IgG
Reactivity:	Human,Mouse,Rat,zebrafish
Conjugation:	Unconjugated
Molecular Weight:	Theoretical: 118 kDa.
Clone:	5U690
Purification:	ProA affinity purified

Applications

Verified Activity:

1. Western blot analysis of Insulin degrading enzyme on different lysates using anti-Insulin degrading enzyme antibody at 1/1,000 dilution. Positive control: Lane 1: zebrafish, Lane 2: Hela, Lane 3: K562.
2. Western blot analysis of Insulin degrading enzyme on hybrid fish (crucian-carp) heart tissue lysate using anti-Insulin degrading enzyme antibody at 1/500 dilution.
3. Immunohistochemical analysis of paraffin-embedded human liver cancer tissue using anti-Insulin degrading enzyme antibody. Counter stained with hematoxylin.
4. Immunohistochemical analysis of paraffin-embedded human colon cancer tissue using anti-Insulin degrading enzyme antibody. Counter stained with hematoxylin.
5. Immunohistochemical analysis of paraffin-embedded human gastric carcinoma tissue using anti-Insulin degrading enzyme antibody. Counter stained with hematoxylin.
6. Immunohistochemical analysis of paraffin-embedded mouse colon tissue using anti-Insulin degrading enzyme antibody. Counter stained with hematoxylin.





Application: IHC, WB
Recommended WB: 1:1000-2000; IHC: 1:50-200

Properties

Stability & Storage: Store at -20°C or -80°C for 12 months. Avoid repeated freeze-thaw cycles.

Shipping: Shipping with blue ice.

Antigen Details

Immunogen: Recombinant Protein
Uniprot ID: P14735
Synonyms: A β -Degrading Protease; Insulin-Degrading Enzyme; Insulin Protease; Insulysin; Insulinase; IDE; Abeta-Degrading Protease

Research Background

Insulin degrading enzyme (IDE), also known as insulinase, insulin protease or insulysin, cleaves the peptide hormone insulin with consequences for insulin response and resistance. IDE is a highly conserved thiol metalloprotease with ubiquitous expression including the brain. Since its discovery, IDE has been shown to degrade a variety of bioactive peptides. Recently the finding that IDE clears intracellular and extracellular amyloid products

has spurred research into the link between IDE function and human neurodegenerative disease such as Alzheimer??
s.

Inhibitor · Natural Compounds · Compound Libraries · Recombinant Proteins

This product is for Research Use Only· Not for Human or Veterinary or Therapeutic Use

Tel:781-999-4286 E_mail:info@targetmol.com Address:34 Washington Street,Wellesley Hills,MA 02481