

## Anti-IL-13RA1 Antibody (1E152)

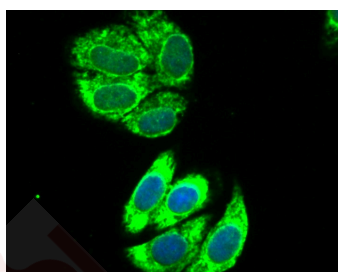
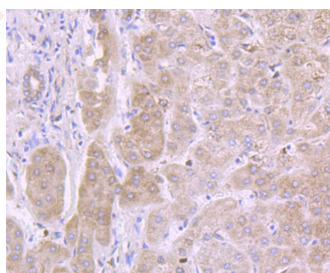
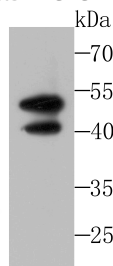
### Product Details

Ig Type:	IgG
Reactivity:	Human
Conjugation:	Unconjugated
Molecular Weight:	Theoretical: 50/40 kDa.
Clone:	1E152
Purification:	ProA affinity purified

### Applications

#### Verified Activity:

1. Western blot analysis of IL13 Receptor alpha 1 on A549 cell lysates using anti-IL13 Receptor alpha 1 antibody at 1/500 dilution.
2. Immunohistochemical analysis of paraffin-embedded human liver tissue using anti-IL13 Receptor alpha 1 antibody. Counter stained with hematoxylin.
3. ICC staining IL13 Receptor alpha 1 in HepG2 cells (green). The nuclear counter stain is DAPI (blue). Cells were fixed in paraformaldehyde, permeabilised with 0.25% Triton X100/PBS.



Application: ICC,IHC,WB

Recommended WB: 1:500-2000; IHC: 1:50-200; ICC: 1:100-500

### Properties

Stability & Storage: Store at -20°C or -80°C for 12 months. Avoid repeated freeze-thaw cycles.

Shipping: Shipping with blue ice.

---

### Antigen Details

Immunogen: Recombinant Protein

Uniprot ID: P78552

Synonyms: Cancer/testis antigen 19; Interleukin-13 receptor subunit alpha-1

---

### Research Background

Interleukin 13 receptor, alpha 1, also known as IL13RA1 and CD213A1 (cluster of differentiation 213A1), is a human gene. Binds with low affinity to interleukin-13 (IL13). Together with IL4RA can form a functional receptor for IL13. Also serves as an alternate accessory protein to the common cytokine receptor gamma chain for interleukin-4 (IL4) signaling, but cannot replace the function of IL2RG in allowing enhanced interleukin-2 (IL2) binding activity. This protein has been shown to bind tyrosine kinase TYK2, and thus may mediate the signaling processes that lead to the activation of JAK1, STAT3 and STAT6 induced by IL13 and IL4.

**Inhibitor · Natural Compounds · Compound Libraries · Recombinant Proteins**

This product is for Research Use Only · Not for Human or Veterinary or Therapeutic Use

Tel: 781-999-4286 E\_mail: info@targetmol.com Address: 34 Washington Street, Wellesley Hills, MA 02481