

## Anti-IKK- gamma Antibody (1A787)

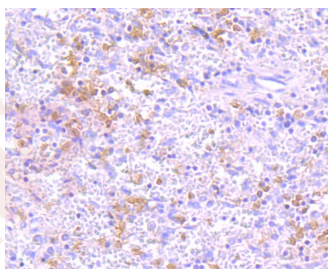
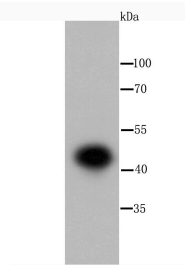
### Product Details

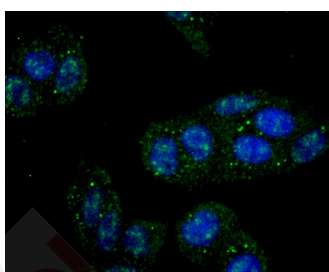
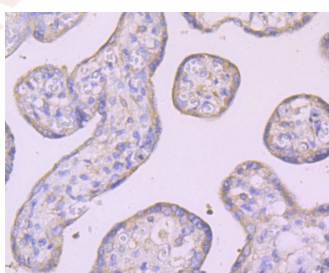
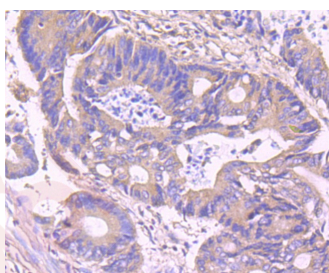
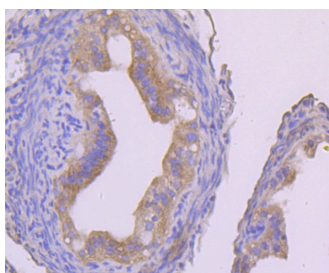
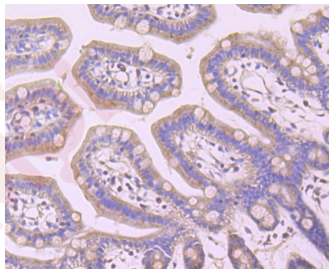
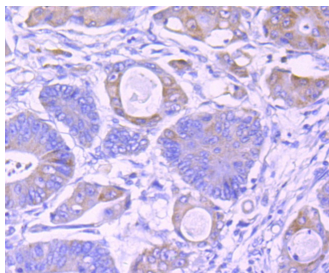
Ig Type:	IgG
Reactivity:	Human,Mouse,Rat
Conjugation:	Unconjugated
Molecular Weight:	Theoretical: 48 kDa.
Clone:	1A787
Purification:	ProA affinity purified

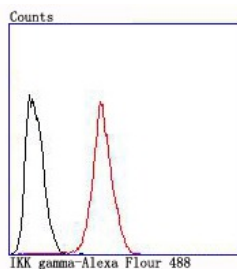
### Applications

#### Verified Activity:

1. Western blot analysis of IKK gamma on Hela cell using anti-IKK gamma antibody at 1/1,000 dilution.
2. Immunohistochemical analysis of paraffin-embedded human spleen tissue using anti-IKK gamma antibody. Counter stained with hematoxylin.
3. Immunohistochemical analysis of paraffin-embedded human colon cancer tissue using anti-IKK gamma antibody. Counter stained with hematoxylin.
4. Immunohistochemical analysis of paraffin-embedded mouse colon tissue using anti-IKK gamma antibody. Counter stained with hematoxylin.
5. Immunohistochemical analysis of paraffin-embedded mouse fallopian tube tissue using anti-IKK gamma antibody. Counter stained with hematoxylin.
6. Immunohistochemical analysis of paraffin-embedded human colon tissue using anti-IKK gamma antibody. Counter stained with hematoxylin.
7. Immunohistochemical analysis of paraffin-embedded human placenta tissue using anti-IKK gamma antibody. Counter stained with hematoxylin.
8. ICC staining IKK gamma in Hela cells (green). The nuclear counter stain is DAPI (blue). Cells were fixed in paraformaldehyde, permeabilised with 0.25% Triton X100/PBS.
9. Flow cytometric analysis of Hela cells with IKK gamma antibody at 1/100 dilution (red) compared with an unlabelled control (cells without incubation with primary antibody; black).







Application: FCM,ICC/IF,IHC,IP,WB

Recommended WB: 1:500-2000; IHC: 1:20-50; ICC/IF: 1:50-200; FCM: 1:50-100

## Properties

Stability & Storage: Store at -20°C or -80°C for 12 months. Avoid repeated freeze-thaw cycles.

Shipping: Shipping with blue ice.

## Antigen Details

Immunogen: Recombinant Protein

Uniprot ID: Q9Y6K9

Synonyms: Inhibitor of kappa light polypeptide gene enhancer in B cells, kinase of, gamma;I-kappa-B kinase subunit gamma;IKKAP1;IMD33;Fip3p;IKKγ;Inhibitor of nuclear factor kappa B kinase subunit gamma;Inhibitor of kappa light polypeptide gene enhancer in B cells, kinase gamma;IκB kinase subunit gamma;AMCBX1;IKK γ;I kappa B kinase gamma;FIP-3;Inhibitor of nuclear factor kappa-B kinase subunit gamma;IκB kinase-associated protein 1;NEMO;IKKG;Ikbkg;Incontinentia pigmenti;FIP 3;ZC2HC9;IP2;FIP3;NF-kappa-B essential modifier;IKK-gamma;IKK g;IP1;IκB kinase gamma subunit;NF kappa B essential modulator;IκB kinase associated protein 1;NEMO\_HUMAN;NF-kappa-B essential modulator;NF kappa B essential modifier;IPD2;IP;IKKgamma

## Research Background

Regulatory subunit of the IKK core complex which phosphorylates inhibitors of NF-kappa-B thus leading to the dissociation of the inhibitor/NF-kappa-B complex and ultimately the degradation of the inhibitor. Its binding to scaffolding polyubiquitin seems to play a role in IKK activation by multiple signaling receptor pathways. However, the specific type of polyubiquitin recognized upon cell stimulation (either 'Lys-63'-linked or linear polyubiquitin) and its functional importance is reported conflictingly. Also considered to be a mediator for TAX activation of NF-kappa-B. Could be implicated in NF-kappa-B-mediated protection from cytokine toxicity. Essential for viral activation of IRF3. Involved in TLR3- and IFIH1-mediated antiviral innate response; this function requires 'Lys-27'-linked polyubiquitination.

**Inhibitor · Natural Compounds · Compound Libraries · Recombinant Proteins**

This product is for Research Use Only. Not for Human or Veterinary or Therapeutic Use

Tel:781-999-4286 E\_mail:info@targetmol.com Address:34 Washington Street,Wellesley Hills,MA 02481