

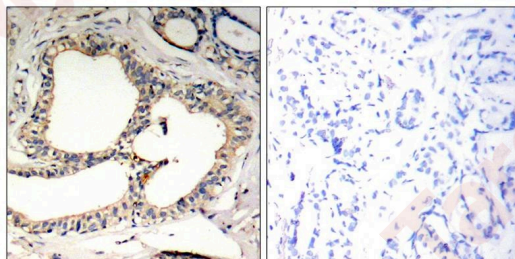
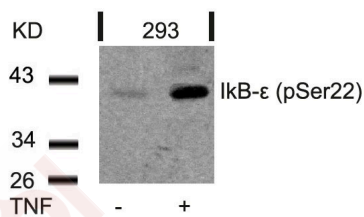
Anti-Phospho-IkB-e (Ser22) Polyclonal Antibody

Product Details

Ig Type:	IgG
Reactivity:	Human,Mouse
Conjugation:	Unconjugated
Purification:	Antibodies were produced by immunizing rabbits with synthetic phosphopeptide and KLH conjugates. Antibodies were purified by affinity-chromatography using epitope-specific phosphopeptide. Non-phospho specific antibodies were removed by chromatography using non-phosphopeptide.

Applications

- Verified Activity:
- Western blot analysis of extracts from 293 cells untreated or treated with TNF using IkB-e (Phospho-Ser22) Antibody TMAC-02121.
 - Immunohistochemical analysis of paraffin-embedded human breast carcinoma tissue using IkB-e (Phospho-Ser22) Antibody TMAC-02121 (left) or the same antibody preincubated with blocking peptide (right).



Application: IHC,WB

Properties

Stability & Storage:	Store at 2°C-8°C for 1 month. Store at -20°C or -80°C for 12 months. Avoid repeated freeze-thaw cycles.
Shipping:	Shipping with blue ice.

Antigen Details

Immunogen: Peptide sequence around phosphorylation site of serine 22 (I-E-S(p)-L-R) derived from Mouse I κ B- ϵ

Antigen Species: Mouse

Uniprot ID: O54910

Synonyms: I κ B-e (p-S22);I κ B-e (p-Ser22);p-I κ B-e (S22);p-I κ B-e (Ser22)

Research Background

Inhibits NF-kappa-B by complexing with and trapping it in the cytoplasm. Inhibits DNA-binding of NF-kappa-B p50-p65 and p50-c-Rel complexes.

Inhibitor · Natural Compounds · Compound Libraries · Recombinant Proteins

This product is for Research Use Only · Not for Human or Veterinary or Therapeutic Use

Tel:781-999-4286 E_mail:info@targetmol.com Address:34 Washington Street,Wellesley Hills,MA 02481