

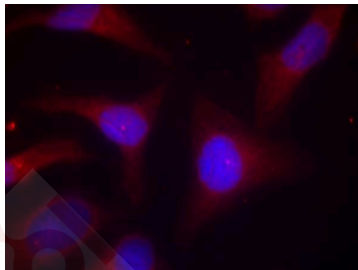
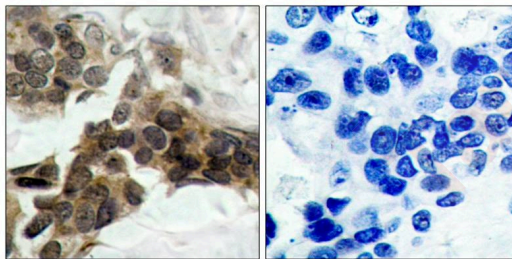
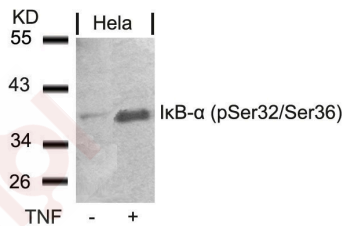
Anti-Phospho-NFKBIA (Ser32, 36) Polyclonal Antibody

Product Details

Ig Type:	IgG
Reactivity:	Human,Mouse
Conjugation:	Unconjugated
Purification:	Antibodies were produced by immunizing rabbits with synthetic phosphopeptide and KLH conjugates. Antibodies were purified by affinity-chromatography using epitope-specific phosphopeptide. Non-phospho specific antibodies were removed by chromatography using non-phosphopeptide.

Applications

- Verified Activity:
1. Western blot analysis of extracts from Hela cells untreated or treated with TNF using IκB-α (Phospho-Ser32/Ser36) Antibody TMAC-02118.
 2. Immunohistochemical analysis of paraffin-embedded human breast carcinoma tissue using IκB-α (Phospho-Ser32/Ser36) Antibody TMAC-02118 (left) or the same antibody preincubated with blocking peptide (right).
 3. Immunofluorescence staining of methanol-fixed Hela cells using IκB-α (Phospho-Ser32/Ser36) Antibody TMAC-02118.



Application: IF,IHC,WB

A DRUG SCREENING EXPERT

Properties

Stability & Storage: Store at 2°C-8°C for 1 month. Store at -20°C or -80°C for 12 months. Avoid repeated freeze-thaw cycles.

Shipping: Shipping with blue ice.

Antigen Details

Immunogen: Peptide sequence around phosphorylation site of serine 32/36 (H-D-S(p)-G-L-D-S(p)-M-K) derived from Human I κ B- α

Antigen Species: human

Uniprot ID: P25963

Synonyms: p-NFKBIA (S32, 36);p-NFKBIA (Ser32, 36);NFKBIA (p-S32, 36);NFKBIA (p-Ser32, 36)

Research Background

Inhibits the activity of dimeric NF-kappa-B/REL complexes by trapping REL dimers in the cytoplasm through masking of their nuclear localization signals. On cellular stimulation by immune and proinflammatory responses, becomes phosphorylated promoting ubiquitination and degradation, enabling the dimeric RELA to translocate to the nucleus and activate transcription.

Inhibitor · Natural Compounds · Compound Libraries · Recombinant Proteins

This product is for Research Use Only · Not for Human or Veterinary or Therapeutic Use

Tel:781-999-4286 E_mail:info@targetmol.com Address:34 Washington Street,Wellesley Hills,MA 02481