

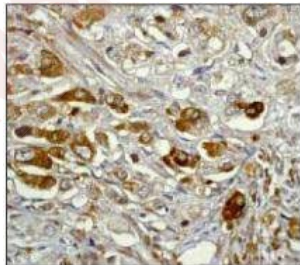
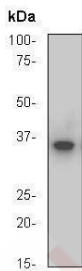
Anti-NFKBIA Antibody (9N642)

Product Details

| | |
|-------------------|----------------------|
| Ig Type: | IgG |
| Reactivity: | Human,Mouse,Rat |
| Conjugation: | Unconjugated |
| Molecular Weight: | Theoretical: 35 kDa. |
| Clone: | 9N642 |
| Purification: | Protein A purified |

Applications

- Verified Activity:
1. Western blot analysis HeLa cell lysate using I κ B- α RabMAb.
 2. Immunohistochemical analysis of paraffin-embedded human prostate carcinoma using I κ B- α RabMAb.



| | |
|--------------|--|
| Application: | ICC,IHC,IP,WB |
| Recommended | WB: 1:1000; IHC: 1:100; ICC: 1:100; IP: 1:10-100 |

Properties

- Stability & Storage: Store at -20°C or -80°C for 12 months. Avoid repeated freeze-thaw cycles.
- Shipping: Shipping with blue ice.

Antigen Details

| | |
|-------------|---|
| Immunogen: | Peptide |
| Uniprot ID: | P25963 |
| Synonyms: | MAD-3;nuclear factor of kappa light polypeptide gene enhancer in B-cells inhibitor, alpha; nuclear factor of kappa light polypeptide gene enhancer in B-cells inhibitor, α ;nuclear factor of κ light polypeptide gene enhancer in B-cells inhibitor, alpha;I κ B α ;IKBA;NFKBI |

Research Background

The NF- κ B/Rel transcription factors are present in the cytosol in an inactive state, complexed with the inhibitory I κ B- α protein. In response to many different NF- κ B-inducing agents—including T-cell mitogens, proinflammatory cytokines, and viral transactivators—the inhibitory I κ B- α is rapidly phosphorylated and degraded. Phosphorylation of I κ B- α at Ser32 and Ser36 has been shown to stimulate conjugation with ubiquitin and subsequent degradation of I κ B- α . Phosphorylation of I κ B- α at Ser32 and Ser36 is critical for activation of NF- κ B, which then translocates to the nucleus and induces transcription of genes that protect organism.

Inhibitor · Natural Compounds · Compound Libraries · Recombinant Proteins

This product is for Research Use Only · Not for Human or Veterinary or Therapeutic Use

Tel:781-999-4286 E_mail:info@targetmol.com Address:34 Washington Street,Wellesley Hills,MA 02481