

Anti-CBX3 Antibody (5C615)

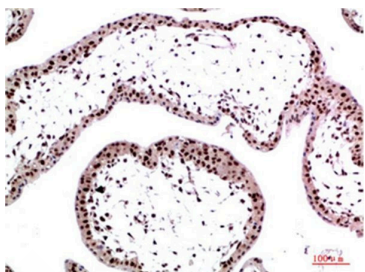
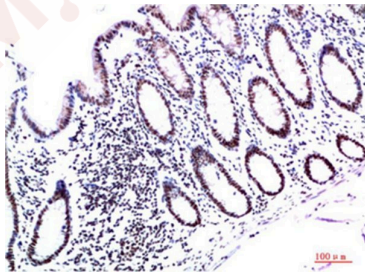
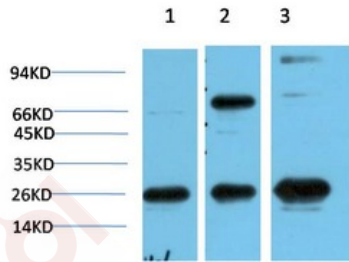
Product Details

Ig Type:	IgG1
Reactivity:	Human,Mouse,Rat
Conjugation:	Unconjugated
Molecular Weight:	Theoretical: 24 kDa.
Clone:	5C615

Applications

Verified Activity:

1. Western blot analysis of 1) Hela Cell Lysate, 2) 3T3 Cell Lysate, 3) PC12 Cell Lysate using HP-1 γ Mouse mAb diluted at 1:1000.
2. Immunohistochemical analysis of paraffin-embedded Human Colon Carcinoma Tissue using HP-1 γ Mouse mAb diluted at 1:200.
3. Immunohistochemical analysis of paraffin-embedded Human Placenta Tissue using HP-1 γ Mouse mAb diluted at 1:200.



Application:	IHC,WB
Recommended	WB: 1:500-2000; IHC: 1:50-2000

Properties

Stability & Storage: Store at -20°C or -80°C for 12 months. Avoid repeated freeze-thaw cycles.

Shipping: Shipping with blue ice.

Antigen Details

Immunogen: Recombinant Protein: HP-1γ

Uniprot ID: Q13185

Synonyms: Chromobox protein homolog 3 (HECH) (Heterochromatin protein 1 homolog gamma) (HP1 gamma) (Modifier 2 protein);CBX 3

Inhibitor · Natural Compounds · Compound Libraries · Recombinant Proteins

This product is for Research Use Only · Not for Human or Veterinary or Therapeutic Use

Tel:781-999-4286 E_mail:info@targetmol.com Address:34 Washington Street,Wellesley Hills,MA 02481