

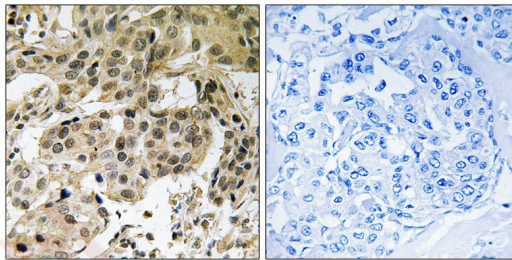
Anti-Phospho-CBX5 (Ser92) Polyclonal Antibody

Product Details

| | |
|-------------------|--|
| Ig Type: | IgG |
| Reactivity: | Human |
| Conjugation: | Unconjugated |
| Molecular Weight: | Actual: 22 kDa. |
| Purification: | Antibodies were produced by immunizing rabbits with synthetic phosphopeptide and KLH conjugates. Antibodies were purified by affinity-chromatography using epitope-specific phosphopeptide. Non-phospho specific antibodies were removed by chromatography using non-phosphopeptide. |

Applications

Verified Activity: 1. Immunohistochemical analysis of paraffin-embedded human breast carcinoma tissue using HP1 α (Phospho-Ser92) antibody TMAC-02004 (left) or the same antibody preincubated with blocking peptide (right).



| | |
|--------------|---------------|
| Application: | IHC |
| Recommended | IHC: 1:50-100 |

Properties

| | |
|----------------------|---|
| Stability & Storage: | Store at -20°C or -80°C for 12 months. Avoid repeated freeze-thaw cycles. |
| Shipping: | Shipping with blue ice. |

Antigen Details

| | |
|------------------|---|
| Immunogen: | Peptide sequence around phosphorylation site of Serine 92(R-S-S(p)-N-F) derived from Human HP1 α |
| Antigen Species: | human |
| Uniprot ID: | P45973 |
| Synonyms: | CBX5 (p-Ser92);p-CBX5 (Ser92);CBX5 (p-S92);p-CBX5 (S92) |

Research Background

Heterochromatin protein-1 (HP1) is a methyl-lysine binding protein localized at heterochromatin sites, where it mediates gene silencing.

Inhibitor · Natural Compounds · Compound Libraries · Recombinant Proteins

This product is for Research Use Only · Not for Human or Veterinary or Therapeutic Use

Tel:781-999-4286 E_mail:info@targetmol.com Address:34 Washington Street,Wellesley Hills,MA 02481