

Anti-CBX3 Antibody (8Z290)

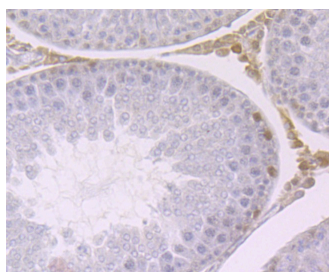
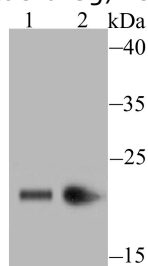
Product Details

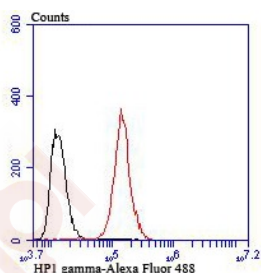
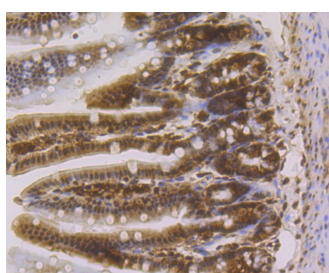
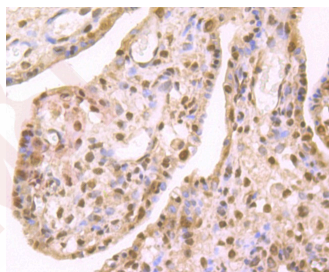
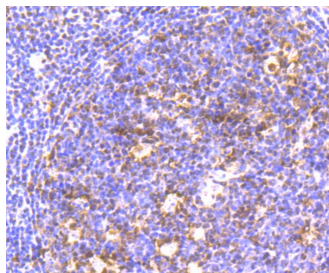
Ig Type:	IgG
Reactivity:	Human,Mouse,Rat
Conjugation:	Unconjugated
Molecular Weight:	Theoretical: 20 kDa.
Clone:	8Z290
Purification:	ProA affinity purified

Applications

Verified Activity:

1. Western blot analysis of HP1 gamma on PC-12 (1) and MCF-7 (2) cell lysate using anti-HP1 gamma antibody at 1/500 dilution.
2. Immunohistochemical analysis of paraffin-embedded rat testis tissue using anti-HP1 gamma antibody. Counter stained with hematoxylin.
3. Immunohistochemical analysis of paraffin-embedded human tonsil tissue using anti-HP1 gamma antibody. Counter stained with hematoxylin.
4. Immunohistochemical analysis of paraffin-embedded human placenta tissue using anti-HP1 gamma antibody. Counter stained with hematoxylin.
5. Immunohistochemical analysis of paraffin-embedded mouse colon tissue using anti-HP1 gamma antibody. Counter stained with hematoxylin.
6. Flow cytometric analysis of Hela cells with HP1 gamma antibody at 1/100 dilution (red) compared with an unlabelled control (cells without incubation with primary antibody; black). Alexa Fluor[®] 488-conjugated goat anti-rabbit IgG was used as the secondary antibody.





Application: FCM,IHC,IP,WB

Recommended WB: 1:500; IHC: 1:50-200; IP: 1:10-50; FCM: 1:50-100

Properties

Stability & Storage: Store at -20°C or -80°C for 12 months. Avoid repeated freeze-thaw cycles.

Shipping: Shipping with blue ice.

Antigen Details

Immunogen: Recombinant Protein

Uniprot ID: Q13185

Synonyms: HP1Hs gamma;Heterochromatin like protein 1;HP1 gamma homolog;Heterochromatin protein 1 homolog gamma;Chromobox homolog 3 (HP1 gamma homolog, Drosophila);Heterochromatin protein 1 homolog gamma;CBX3;HECH;Chromobox protein homolog 3;CBX 3;GAMMA;HP1 gamma;Modifier 2 protein;CBX3_HUMAN;Chromobox homolog 3

Research Background

Chromatin assembly factor-1 (CAF-1) is a multisubunit protein complex that comprises three polypeptide subunits known as p150, p60, and p48. CAF-1 is a nucleosome assembly factor that deposits newly synthesized and acetylated histones H3/H4 into nascent chromatin during DNA replication. The p150 subunit of CAF-1 also supports the maintenance of heterochromatin, which requires the synthesis of both new histones and heterochromatin proteins and their orderly assembly during DNA replication. Heterochromatin is characterized as densely coiled chromatin that generally replicates late during S phase, has a low gene density, and contains large blocks of repetitive DNA that is relatively inaccessible to DNA-modifying reagents. In late S phase, p150 directly associates with heterochromatin associated proteins 1 (HP1 α , HP1 β and HP1 γ). As cells prepare for mitosis, CAF-1 p150 and some HP1 progressively dissociate from heterochromatin, coinciding with the phosphorylation of Histone H3. The HP1 proteins reassociate with chromatin at the end of mitosis, as Histone H3 is dephosphorylated.

Inhibitor · Natural Compounds · Compound Libraries · Recombinant Proteins

This product is for Research Use Only · Not for Human or Veterinary or Therapeutic Use

Tel:781-999-4286 E_mail:info@targetmol.com Address:34 Washington Street,Wellesley Hills,MA 02481