

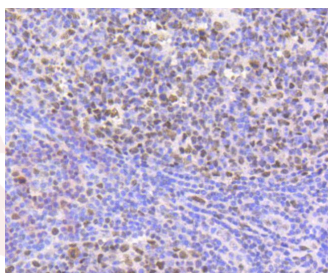
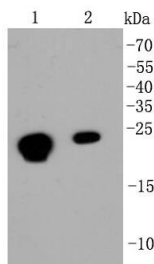
Anti-CBX5 Antibody (5G758)

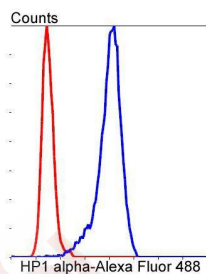
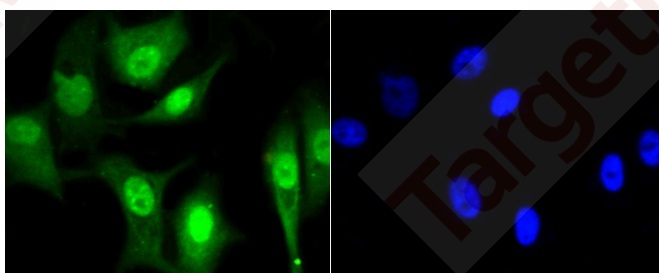
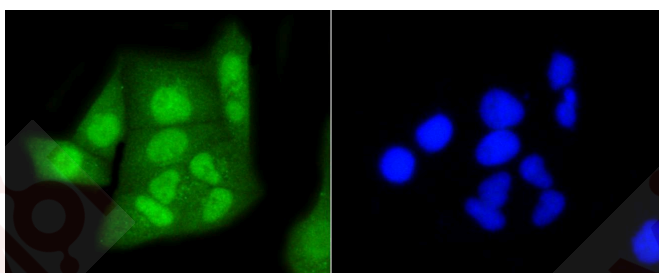
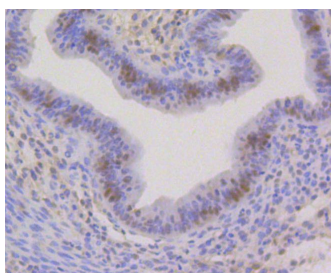
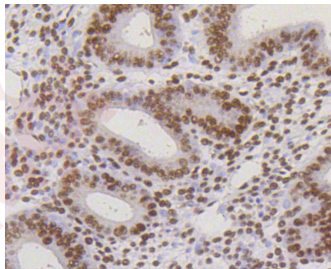
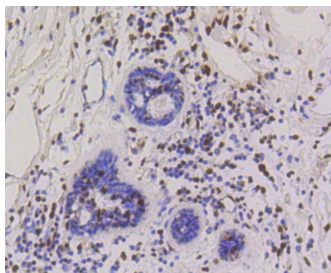
Product Details

Ig Type:	IgG
Reactivity:	Human,Mouse,Rat
Conjugation:	Unconjugated
Molecular Weight:	Theoretical: 22 kDa.
Clone:	5G758
Purification:	ProA affinity purified

Applications

1. Western blot analysis of HP1 alpha on different cell lysates using anti-HP1 alpha antibody at 1/1,000 dilution. Positive control: Lane 1: MCF-7, Lane 2: Hela.
2. Immunohistochemical analysis of paraffin-embedded human tonsil tissue using anti-HP1 alpha antibody. Counter stained with hematoxylin.
3. Immunohistochemical analysis of paraffin-embedded human breast carcinoma tissue using anti-HP1 alpha antibody. Counter stained with hematoxylin.
4. Immunohistochemical analysis of paraffin-embedded human uterus tissue using anti-HP1 alpha antibody. Counter stained with hematoxylin.
5. Immunohistochemical analysis of paraffin-embedded mouse uterus tissue using anti-HP1 alpha antibody. Counter stained with hematoxylin.
6. ICC staining HP1 alpha in Hela cells (green). The nuclear counter stain is DAPI (blue). Cells were fixed in paraformaldehyde, permeabilised with 0.25% Triton X100/PBS.
7. ICC staining HP1 alpha in MCF-7 cells (green). The nuclear counter stain is DAPI (blue). Cells were fixed in paraformaldehyde, permeabilised with 0.25% Triton X100/PBS.
8. Flow cytometric analysis of SH-SY-5Y cells with HP1 alpha antibody at 1/50 dilution (blue) compared with an unlabelled control (cells without incubation with primary antibody; red). Alexa Fluor 488-conjugated goat anti rabbit IgG was used as the secondary antibody.





Application: FCM, ICC/IF, IHC, IP, WB

Recommended WB: 1:1000-5000; IHC: 1:50-200; ICC/IF: 1:50-200; FCM: 1:50-100

Properties

Stability & Storage: Store at -20°C or -80°C for 12 months. Avoid repeated freeze-thaw cycles.

Shipping: Shipping with blue ice.

Antigen Details

Immunogen: Recombinant Protein

Uniprot ID: P45973

Synonyms: Antigen p25;HP1A;CBX5;Chromobox protein homolog 5;Heterochromatin protein 1 homolog alpha (HP1 alpha)

Research Background

The family of Heterochromatin Protein 1 (HP1) ("Chromobox Homolog", CBX) are highly conserved adapter proteins, which have important functions in the cell nucleus. These functions include gene repression by heterochromatin formation, transcriptional activation, regulation of binding of cohesion complexes to centromere, sequestration of genes to nuclear periphery, transcriptional arrest, maintenance of heterochromatin integrity, gene repression at single nucleosome level and gene repression by heterochromatinization of euchromatin. Three different paralogs of HP1 are found in mammals, HP1 α , HP1 β and HP1 γ .

Inhibitor · Natural Compounds · Compound Libraries · Recombinant Proteins

This product is for Research Use Only · Not for Human or Veterinary or Therapeutic Use

Tel: 781-999-4286 E_mail: info@targetmol.com Address: 34 Washington Street, Wellesley Hills, MA 02481