

## Anti-HLA-E Antibody (6I53)

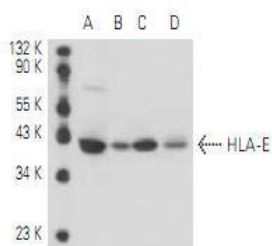
## Product Details

Reactivity:	Human
Conjugation:	Unconjugated
Molecular Weight:	Theoretical: 40 kDa.
Clone:	6I53
Purification:	ProA affinity purified

## Applications

## Verified Activity:

1. Western blot analysis of HLA-E expression in human PBL (A), BJAB (B), CCRF-CEM (C) and AML-193 (D) whole cell lysates.



Application: FCM, IP, WB

Recommended WB: 1:100-1000; IP: 1-2 µg per 100-500 µg of total protein (1 ml of cell lysate) FCMM: 1 µg per 1 x 10<sup>6</sup> cells; FCM: 1 µg per 1 x 10<sup>6</sup> cells

## Properties

Stability & Storage: Store at -20°C or -80°C for 12 months. Avoid repeated freeze-thaw cycles.

Shipping: Shipping with blue ice.

## Antigen Details

Immunogen: Recombinant HLA-E of human origin

Antigen Species: Human

Uniprot ID: P13747

Synonyms: MHC class I antigen E; alpha chain E; HLA-E; HLA-E; HLA class I histocompatibility antigen, alpha chain E; HLA-6.2

## Research Background

Major histocompatibility complex (MHC) molecules, which include human leukocyte antigens (HLAs), form an integral part of the immune response system. They are cell surface receptors that bind foreign peptides and present them to cytotoxic T lymphocytes (CTLs). MHC class I molecules consist of two polypeptide chains, an  $\alpha$  or heavy chain and a non-covalently associated protein,  $\beta$ -2-Microglobulin. The differential structural properties of MHC class I and class II molecules account for their respective roles in activating different populations of T lymphocytes. HLA-A is a MHC class I heavy chain molecule that plays a central role in the immune system by presenting peptides derived from the endoplasmic reticulum lumen. HLA-B and HLA-C are proteins encoded by closely related genes that also

## A DRUG SCREENING EXPERT

---

exist in the MHC class I. HLA-E belongs to the HLA class I heavy chain paralog. HLA-E is a heterodimer consisting of a heavy chain and a light chain; the heavy chain is anchored in the membrane. HLA-E binds a restricted subset of peptides derived from the leader peptides of other class I molecules.

**Inhibitor · Natural Compounds · Compound Libraries · Recombinant Proteins**

This product is for Research Use Only · Not for Human or Veterinary or Therapeutic Use

Tel:781-999-4286 E\_mail:info@targetmol.com Address:34 Washington Street,Wellesley Hills,MA 02481