

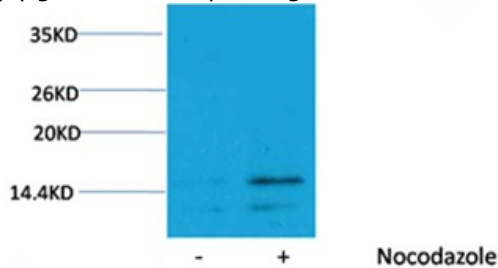
Anti-Phospho-HIST1H3A (Ser28) Polyclonal Antibody

Product Details

Ig Type:	IgG
Reactivity:	Human,Mouse,Rat
Conjugation:	Unconjugated
Molecular Weight:	Actual: 15-17 kDa.
Purification:	Antibodies were purified by affinity-chromatography using epitope-specific phosphopeptide. Non-phospho specific antibodies were removed by chromatography using non-phosphopeptide.

Applications

Verified Activity: 1. Western blot analysis of extracts from Hela cells, untreated (-) or treated with Nocodazole (1µg/ml, 24 hr; +), using TMAC-01940 diluted at 1:1,000.



Application:	WB
Recommended	WB: 1:200-500

Properties

Stability & Storage:	Store at -20°C or -80°C for 12 months. Avoid repeated freeze-thaw cycles.
Shipping:	Shipping with blue ice.

Antigen Details

Immunogen:	Peptide sequence around phosphorylation site of serine 28(R-K-S(p)-A-P) derived from Human Histone H3
Antigen Species:	human
Uniprot ID:	P68431
Synonyms:	HIST1H3A (p-Ser28);HIST1H3A (p-S28);p-HIST1H3A (Ser28);p-HIST1H3A (S28)

Research Background

Histone H3 is one of the five main histone proteins involved in the structure of chromatin in eukaryotic cells. Core component of nucleosome. Nucleosomes wrap and compact DNA into chromatin, limiting DNA accessibility to the cellular machineries which require DNA as a template. Histones thereby play a central role in transcription regulation, DNA repair, DNA replication and chromosomal stability.

Inhibitor · Natural Compounds · Compound Libraries · Recombinant Proteins

This product is for Research Use Only · Not for Human or Veterinary or Therapeutic Use

Tel:781-999-4286 E_mail:info@targetmol.com Address:34 Washington Street,Wellesley Hills,MA 02481