

Anti-Mono-methyl-HIST1H3A (Lys80) Polyclonal Antibody

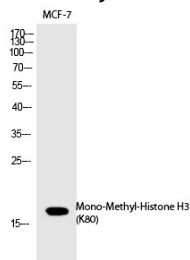
Product Details

Ig Type:	IgG
Reactivity:	Human,Mouse,Rat
Conjugation:	Unconjugated
Molecular Weight:	Actual: 17 kDa.
Purification:	The antibody was affinity-purified from rabbit antiserum by affinity-chromatography using epitope-specific immunogen.

Applications

Verified Activity:

1. Western Blot analysis of MCF-7 cells using Mono-Methyl-Histone H3 (K80) Polyclonal Antibody.



Application:	ELISA,WB
Recommended	WB: 1:500-2000; ELISA: 1:20000

Properties

Stability & Storage:	Store at -20°C or -80°C for 12 months. Avoid repeated freeze-thaw cycles.
Shipping:	Shipping with blue ice.

Antigen Details

Immunogen:	A synthesized monomethylpeptide: human Histone H3 around the Monomethylation site of K80
Antigen Species:	Human
Synonyms:	Histone H3K80-monomethylated;H3K80me;Mono-methyl-HIST1H3A (K80);Mono-Me-HIST1H3A (Lys80);MonoMe-H3K80;Mono-Me-HIST1H3A (K80)

Inhibitor · Natural Compounds · Compound Libraries · Recombinant Proteins

This product is for Research Use Only. Not for Human or Veterinary or Therapeutic Use

Tel:781-999-4286 E_mail:info@targetmol.com Address:34 Washington Street,Wellesley Hills,MA 02481