

## Anti-Mono-methyl-HIST1H3A (Lys10) Polyclonal Antibody

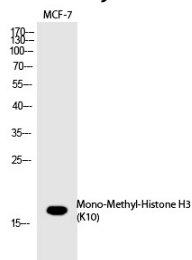
## Product Details

Ig Type:	IgG
Reactivity:	Human,Mouse,Rat
Conjugation:	Unconjugated
Molecular Weight:	Actual: 17 kDa.
Purification:	The antibody was affinity-purified from rabbit antiserum by affinity-chromatography using epitope-specific immunogen.

## Applications

## Verified Activity:

1. Western Blot analysis of MCF-7 cells using Mono-Methyl-Histone H3 (K10) Polyclonal Antibody.



Application:	ELISA,WB
Recommended	WB: 1:500-2000; ELISA: 1:20000

## Properties

Stability & Storage:	Store at -20°C or -80°C for 12 months. Avoid repeated freeze-thaw cycles.
Shipping:	Shipping with blue ice.

## Antigen Details

Immunogen:	A synthesized monomethylpeptide: human Histone H3 around the Monomethylation site of K10
Antigen Species:	Human
Uniprot ID:	P68431
Synonyms:	MonoMe-H3K10;Histone H3K10-monomethylated;Mono-Me-HIST1H3A (K10);Mono-methyl-HIST1H3A (K10);Mono-Me-HIST1H3A (Lys10);H3K10me

**Inhibitor · Natural Compounds · Compound Libraries · Recombinant Proteins**

This product is for Research Use Only. Not for Human or Veterinary or Therapeutic Use

Tel:781-999-4286 E\_mail:info@targetmol.com Address:34 Washington Street,Wellesley Hills,MA 02481