

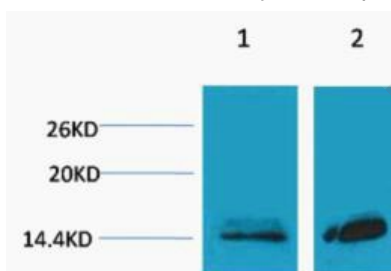
Anti-Mono-methyl-HIST1H3A (Lys27) Polyclonal Antibody

Product Details

Ig Type: IgG
Reactivity: Human,Mouse
Conjugation: Unconjugated
Molecular Weight: Theoretical: 15-17 kDa.

Applications

Verified Activity: 1. Western blot analysis of 1) HeLa, 2) 3T3, diluted at 1:1000.



Application: WB
Recommended WB: 1:500-1000

Properties

Stability & Storage: Store at -20°C or -80°C for 12 months. Avoid repeated freeze-thaw cycles.
Shipping: Shipping with blue ice.

Antigen Details

Immunogen: A synthesized monomethylpeptide: Histone H3 around the Monomethylation site of Lys27
Synonyms: Mono-Me-HIST1H3A (Lys27); MonoMe-H3K27; Mono-Me-HIST1H3A (K27); Histone H3K27-monomethylated; Mono-methyl-HIST1H3A (K27); H3K27me

Inhibitor · Natural Compounds · Compound Libraries · Recombinant Proteins

This product is for Research Use Only. Not for Human or Veterinary or Therapeutic Use

Tel: 781-999-4286 E_mail: info@targetmol.com Address: 34 Washington Street, Wellesley Hills, MA 02481