

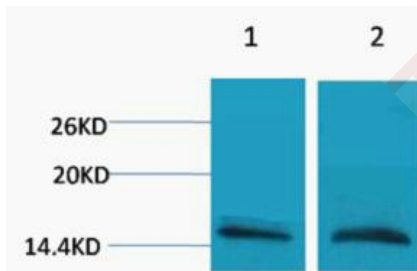
## Anti-Mono-methyl-HIST1H3A (Arg26) Polyclonal Antibody

### Product Details

Ig Type: IgG  
Reactivity: Human,Mouse  
Conjugation: Unconjugated  
Molecular Weight: Theoretical: 15-17 kDa.

### Applications

Verified Activity: 1. Western blot analysis of 1) HeLa, 2) 3T3, diluted at 1:1000.



Application: WB  
Recommended WB: 1:500-1000

### Properties

Stability & Storage: Store at -20°C or -80°C for 12 months. Avoid repeated freeze-thaw cycles.  
Shipping: Shipping with blue ice.

### Antigen Details

Immunogen: A synthesized monomethylpeptide: Histone H3 around the Monomethylation site of Arg26  
Synonyms: Histone H3R26-monomethylated; Mono-methyl-HIST1H3A (R26); Mono-Me-HIST1H3A (Arg26); MonoMe-H3R26; Mono-Me-HIST1H3A (R26); H3R26me

**Inhibitor · Natural Compounds · Compound Libraries · Recombinant Proteins**

This product is for Research Use Only · Not for Human or Veterinary or Therapeutic Use

Tel:781-999-4286 E\_mail:info@targetmol.com Address:34 Washington Street,Wellesley Hills,MA 02481