

Anti-Tri-methyl-HIST1H3A (Lys5) Polyclonal Antibody

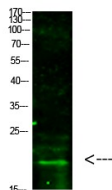
Product Details

| | |
|-------------------|---|
| Ig Type: | IgG |
| Reactivity: | Human,Mouse,Rat |
| Conjugation: | Unconjugated |
| Molecular Weight: | Theoretical: 17 kDa. |
| Purification: | The antibody was affinity-purified from rabbit antiserum by affinity-chromatography using epitope-specific immunogen. |

Applications

Verified Activity:

1. Western Blot analysis of hela cells using primary antibody diluted at 1:1000(°C overnight). Secondary antibodyGoat Anti-rabbit IgG IRDye 800(diluted at 1:5000, 25°C, 1 hour).



| | |
|--------------|----------------|
| Application: | WB |
| Recommended | WB: 1:500-2000 |

Properties

| | |
|----------------------|---|
| Stability & Storage: | Store at -20°C or -80°C for 12 months. Avoid repeated freeze-thaw cycles. |
| Shipping: | Shipping with blue ice. |

Antigen Details

| | |
|------------------|--|
| Immunogen: | A synthesized trimethylpeptide: human Histone H3 around the trimethylation site of K5 |
| Antigen Species: | human |
| Synonyms: | Tri-Me-HIST1H3A (K5);Histone H3K5-trimethylated;H3K5me3;TriMe-H3K5;Tri-methyl-HIST1H3A (K5);Tri-Me-HIST1H3A (Lys5) |

Inhibitor · Natural Compounds · Compound Libraries · Recombinant Proteins

This product is for Research Use Only· Not for Human or Veterinary or Therapeutic Use

Tel:781-999-4286 E_mail:info@targetmol.com Address:34 Washington Street,Wellesley Hills,MA 02481