

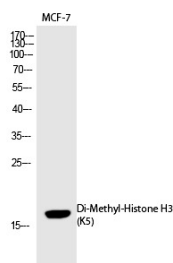
## Anti-Di-methyl-HIST1H3A (Lys5) Polyclonal Antibody

## Product Details

Ig Type:	IgG
Reactivity:	Human,Mouse,Rat
Conjugation:	Unconjugated
Molecular Weight:	Actual: 17 kDa.
Purification:	The antibody was affinity-purified from rabbit antiserum by affinity-chromatography using epitope-specific immunogen.

## Applications

Verified Activity: 1. Western Blot analysis of MCF-7 cells using Di-Methyl-Histone H3 (K5) Polyclonal Antibody.



Application: ELISA,WB  
Recommended WB: 1:500-2000; ELISA: 1:20000

## Properties

Stability & Storage: Store at -20°C or -80°C for 12 months. Avoid repeated freeze-thaw cycles.  
Shipping: Shipping with blue ice.

## Antigen Details

Immunogen: A synthesized dimethylpeptide: human Histone H3 around the dimethylation site of K5  
Antigen Species: Human  
Uniprot ID: P68431  
Synonyms: H3K5me2;Di-Me-HIST1H3A (K5);Di-Me-HIST1H3A (Lys5);Di-methyl-HIST1H3A (K5);Histone H3K5-dimethylated;DiMe-H3K5

**Inhibitor · Natural Compounds · Compound Libraries · Recombinant Proteins**

This product is for Research Use Only. Not for Human or Veterinary or Therapeutic Use

Tel:781-999-4286 E\_mail:info@targetmol.com Address:34 Washington Street,Wellesley Hills,MA 02481