

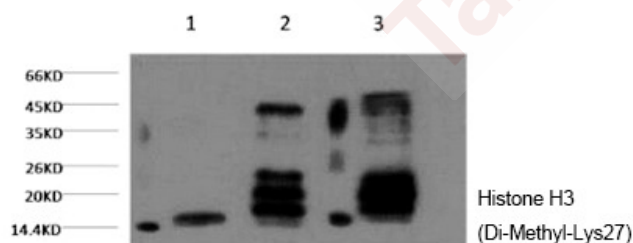
Anti-Di-methyl-HIST1H3A (Lys27) Antibody (6P532)

Product Details

| | |
|-------------------|--|
| Reactivity: | Human,Mouse,Rat |
| Conjugation: | Unconjugated |
| Molecular Weight: | Actual: 15 kDa. |
| Clone: | 6P532 |
| Purification: | The antibody was affinity-purified from antiserum by affinity-chromatography |

Applications

Verified Activity: 1. Western blot analysis of 1) HeLa, 2) Rat Testis tissue, 3) Raw264.7, diluted at 1:2000.



| | |
|--------------|-----------------|
| Application: | WB |
| Recommended | WB: 1:1000-2000 |

Properties

| | |
|----------------------|---|
| Stability & Storage: | Store at -20°C or -80°C for 12 months. Avoid repeated freeze-thaw cycles. |
| Shipping: | Shipping with blue ice. |

Antigen Details

| | |
|-------------|--|
| Immunogen: | di methyl peptide at K27 of Histone H3 |
| Uniprot ID: | P68431 |
| Synonyms: | Histone H3K27-dimethylated; DiMe-H3K27; Di-Me-HIST1H3A (Lys27); Di-Me-HIST1H3A (K27); H3K27me2; Di-methyl-HIST1H3A (K27) |

Inhibitor · Natural Compounds · Compound Libraries · Recombinant Proteins

This product is for Research Use Only. Not for Human or Veterinary or Therapeutic Use

Tel: 781-999-4286 E_mail: info@targetmol.com Address: 34 Washington Street, Wellesley Hills, MA 02481