

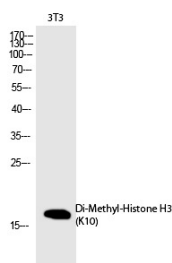
Anti-Di-methyl-Histone H3 (Lys10) Polyclonal Antibody

Product Details

Ig Type:	IgG
Reactivity:	Human,Mouse,Rat
Conjugation:	Unconjugated
Molecular Weight:	Actual: 17 kDa.
Purification:	The antibody was affinity-purified from rabbit antiserum by affinity-chromatography using epitope-specific immunogen.

Applications

Verified Activity: 1. Western Blot analysis of 3T3 cells using Di-Methyl-Histone H3 (K10) Polyclonal Antibody.



Application: ELISA,WB
Recommended WB: 1:500-2000; ELISA: 1:10000

Properties

Stability & Storage: Store at -20°C or -80°C for 12 months. Avoid repeated freeze-thaw cycles.
Shipping: Shipping with blue ice.

Antigen Details

Immunogen: A synthesized dimethylpeptide: human Histone H3 around the dimethylation site of K10
Antigen Species: Human
Synonyms: Di-methyl-Histone H3 (K10);DiMe-H3K10;Di-Me-Histone H3 (K10);Di-Me-Histone H3 (Lys10); Histone H3K10-dimethylated;H3K10me2

Inhibitor · Natural Compounds · Compound Libraries · Recombinant Proteins

This product is for Research Use Only. Not for Human or Veterinary or Therapeutic Use

Tel:781-999-4286 E_mail:info@targetmol.com Address:34 Washington Street,Wellesley Hills,MA 02481