

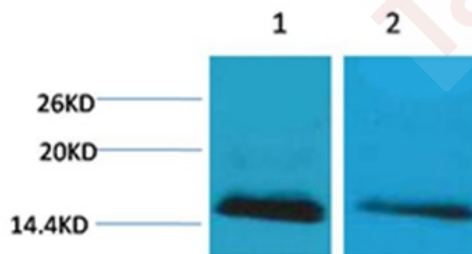
Anti-Mono-methyl-Histone H2B type 1-B (Lys5) Polyclonal Antibody

Product Details

Ig Type:	IgG
Reactivity:	Human,Mouse,Rat
Conjugation:	Unconjugated
Molecular Weight:	Actual: 14 kDa.
Purification:	Affinity purification using immunogen.

Applications

Verified Activity: 1. Western blot analysis of 1) HeLa, 2)3T3, using TMAC-01874 diluted at 1:2,000.



Application:	WB
Recommended	WB: 1:500-1000

Properties

Stability & Storage:	Store at -20°C or -80°C for 12 months. Avoid repeated freeze-thaw cycles.
Shipping:	Shipping with blue ice.

Antigen Details

Immunogen:	A synthesized monomethylpeptide: human histone H2B around the Monomethylation site of Lys25
Antigen Species:	Human
Uniprot ID:	P33778
Synonyms:	Mono-Me-Histone H2B type 1-B (K5); Mono-methyl-Histone H2B type 1-B (K5); H2K5me; MonoMe-H2K5; Histone H2K5-monomethylated; Mono-Me-Histone H2B type 1-B (Lys5)

Research Background

Histone H2B is one of the 5 main histone proteins involved in the structure of chromatin in eukaryotic cells.

Inhibitor · Natural Compounds · Compound Libraries · Recombinant Proteins

This product is for Research Use Only. Not for Human or Veterinary or Therapeutic Use

Tel: 781-999-4286 E_mail: info@targetmol.com Address: 34 Washington Street, Wellesley Hills, MA 02481