

Anti-Acetyl-H2A.1 (Lys15) Polyclonal Antibody

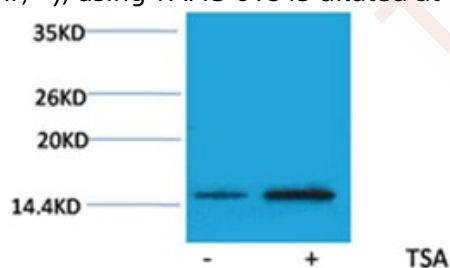
Product Details

Ig Type:	IgG
Reactivity:	Human,Mouse,Rat
Conjugation:	Unconjugated
Molecular Weight:	Actual: 14 kDa.
Purification:	Affinity purification using immunogen.

Applications

Verified Activity:

1. Western blot analysis of extracts from Hela cells, untreated (-) or treated with TSA (1 μ M, 18 hr; +), using TMAC-01845 diluted at 1:2,000.



Application:	WB
Recommended	WB: 1:500-1000

Properties

Stability & Storage:	Store at -20°C or -80°C for 12 months. Avoid repeated freeze-thaw cycles.
Shipping:	Shipping with blue ice.

Antigen Details

Immunogen:	A synthesized acetylpeptide: human histone H2A around the acetylation site of Lys15
Antigen Species:	Human
Uniprot ID:	P0C0S8
Synonyms:	Ac-H2A.1 (Lys15);H2A.1K15-acetylated;Acetyl-H2A.1 (K15);H2A.1K15ac;Ac-H2A.1K15;Ac-H2A.1 (K15)

Research Background

Histone H2A is one of the five main histone proteins involved in the structure of chromatin in eukaryotic cells. Core component of nucleosome. Nucleosomes wrap and compact DNA into chromatin, limiting DNA accessibility to the cellular machineries which require DNA as a template.

Inhibitor · Natural Compounds · Compound Libraries · Recombinant Proteins

This product is for Research Use Only · Not for Human or Veterinary or Therapeutic Use

Tel:781-999-4286 E_mail:info@targetmol.com Address:34 Washington Street,Wellesley Hills,MA 02481