

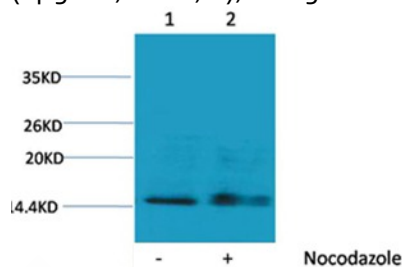
## Anti-Phospho-HIST1H1C (Ser1) Polyclonal Antibody

## Product Details

Ig Type:	IgG
Reactivity:	Human,Rat,Mouse
Conjugation:	Unconjugated
Molecular Weight:	Actual: 17-25 kDa.
Purification:	Antibodies were purified by affinity-chromatography using epitope-specific phosphopeptide. Non-phospho specific antibodies were removed by chromatography using non-phosphopeptide.

## Applications

Verified Activity: 1. Western blot analysis of extracts from Hela cells, untreated (-) or treated with Nocodazole (1µg/ml, 24 hr; +), using TMAC-01837 diluted at 1:1,000.



Application:	WB
Recommended	WB: 1:1000-2000

## Properties

Stability & Storage:	Store at -20°C or -80°C for 12 months. Avoid repeated freeze-thaw cycles.
Shipping:	Shipping with blue ice.

## Antigen Details

Immunogen:	Peptide sequence around phosphorylation site of serine 1(M-S(p)-E-T) derived from Human Histone H1
Antigen Species:	Human
Uniprot ID:	P16403
Synonyms:	p-HIST1H1C (Ser1);HIST1H1C (p-S1);p-HIST1H1C (S1);HIST1H1C (p-Ser1)

## Research Background

Histone H1 is one of the five main histone protein families which are components of chromatin in eukaryotic cells. May play a key role in the control of gene expression during oogenesis and early embryogenesis, presumably through the perturbation of chromatin structure.

**Inhibitor · Natural Compounds · Compound Libraries · Recombinant Proteins**

This product is for Research Use Only · Not for Human or Veterinary or Therapeutic Use

Tel:781-999-4286 E\_mail:info@targetmol.com Address:34 Washington Street,Wellesley Hills,MA 02481