

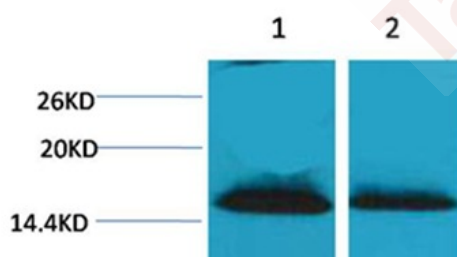
## Anti-Di-methyl-Histone H1 (Lys25) Polyclonal Antibody

## Product Details

Ig Type:	IgG
Reactivity:	Human,Rat,Mouse
Conjugation:	Unconjugated
Molecular Weight:	Actual: 17-25 kDa.
Purification:	Affinity purification using immunogen.

## Applications

Verified Activity: 1. Western blot analysis of 1) HeLa, 2)3T3, using TMAC-01835 diluted at 1:2,000.



Application:	WB
Recommended	WB: 1:500-1000

## Properties

Stability & Storage:	Store at -20°C or -80°C for 12 months. Avoid repeated freeze-thaw cycles.
Shipping:	Shipping with blue ice.

## Antigen Details

Immunogen:	A synthesized dimethylpeptide: human histone H1 around the dimethylation site of Lys25
Antigen Species:	Human
Uniprot ID:	P16403
Synonyms:	DiMe-H1K25;Di-Me-Histone H1 (Lys25);Di-methyl-Histone H1 (K25);H1K25me2;Di-Me-Histone H1 (K25);Histone H1K25-dimethylated

## Research Background

Histone H1 is one of the five main histone protein families which are components of chromatin in eukaryotic cells. May play a key role in the control of gene expression during oogenesis and early embryogenesis, presumably through the perturbation of chromatin structure.

**Inhibitor · Natural Compounds · Compound Libraries · Recombinant Proteins**

This product is for Research Use Only. Not for Human or Veterinary or Therapeutic Use

Tel:781-999-4286 E\_mail:info@targetmol.com Address:34 Washington Street,Wellesley Hills,MA 02481