

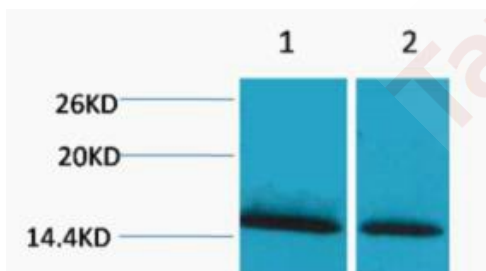
Anti-Mono-methyl-HIST1H1A (Lys25) Polyclonal Antibody

Product Details

Ig Type: IgG
Reactivity: Human,Mouse,Rat
Conjugation: Unconjugated
Molecular Weight: Theoretical: 17-25 kDa.

Applications

Verified Activity: 1. Western blot analysis of 1) HeLa, 2) 3T3, diluted at 1:2000.



Application: WB
Recommended WB: 1:500-1000

Properties

Stability & Storage: Store at -20°C or -80°C for 12 months. Avoid repeated freeze-thaw cycles.
Shipping: Shipping with blue ice.

Antigen Details

Immunogen: A synthesized monomethylpeptide: Histone H1 around the Monomethylation site of Lys25
Uniprot ID: Q02539
Synonyms: MonoMe-H1K25;Histone H1K25-monomethylated;H1K25me;Mono-Me-HIST1H1A (Lys25); Mono-methyl-HIST1H1A (K25);Mono-Me-HIST1H1A (K25)

Inhibitor · Natural Compounds · Compound Libraries · Recombinant Proteins

This product is for Research Use Only. Not for Human or Veterinary or Therapeutic Use

Tel:781-999-4286 E_mail:info@targetmol.com Address:34 Washington Street,Wellesley Hills,MA 02481