

Anti-His Tag Antibody (9L693)

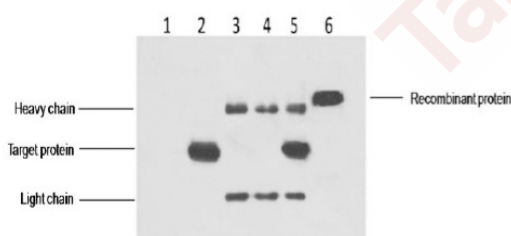
Product Details

Conjugation:	Unconjugated
Clone:	9L693
Purification:	Affinity-chromatography

Applications

Verified Activity:

1. IP antibody use: 5ug His Mouse IgG1 per ml Lysate, WB 1:30001、untransfected 293 cell lysate2、transfected 293 cell lysate with His-tag fusion protein3、IP (untransfected 293+anti-His mAb+ Protein G agarose)4、IP (transfected 293+ normal Mouse IgG+Protein G agarose)5、IP (transfected 293+anti-His mAb+ Protein G agarose)6、Recombinant protein (E.coli).



Application:	ICC/IF,WB
Recommended	WB: 1:3000-10000; ICC/IF: 1:200

Properties

Stability & Storage: Store at -20°C or -80°C for 12 months. Avoid repeated freeze-thaw cycles.

Shipping: Shipping with blue ice.

Antigen Details

Immunogen: KLH conjugated synthetic peptide: HHHHHH

Inhibitor · Natural Compounds · Compound Libraries · Recombinant Proteins

This product is for Research Use Only· Not for Human or Veterinary or Therapeutic Use

Tel:781-999-4286 E_mail:info@targetmol.com Address:34 Washington Street,Wellesley Hills,MA 02481