

Anti-His Tag Antibody (6Y42)

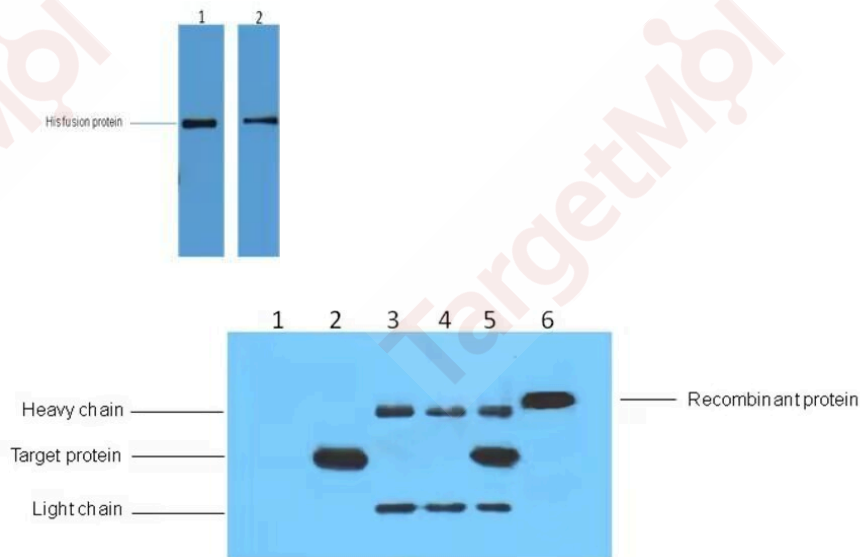
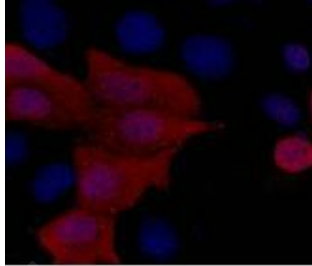
Product Details

Ig Type: IgG1
Conjugation: Unconjugated
Clone: 6Y42

Applications

Verified Activity:

1. IF analysis of 293 cells transfected with a His-tag protein, 1:1000 dilution (blue DAPI, red anti-His)
2. 2ug His fusion protein+ Primary antibody dilution at 1) 1:5000 2) 1:10000.
3. IP antibody use: 5ug His Mouse IgG1 per ml Lysate, WB 1: 3000 1) untransfected 293 cell lysate 2) transfected 293 cell lysate with His-tag fusion protein 3) IP (untransfected 293+anti-His mAb+ Protein G agarose) 4) IP (transfected 293+ normal Mouse IgG.



Application: IF,IP,WB

Recommended WB: 1:3000; IP: 1:200; IF: 1:1000

A DRUG SCREENING EXPERT

Properties

Stability & Storage: Store at -20°C or -80°C for 12 months. Avoid repeated freeze-thaw cycles.

Shipping: Shipping with blue ice.

Antigen Details

Immunogen: KLH conjugated synthetic peptide: HHHHHH

Inhibitor · Natural Compounds · Compound Libraries · Recombinant Proteins

This product is for Research Use Only · Not for Human or Veterinary or Therapeutic Use

Tel: 781-999-4286 E_mail: info@targetmol.com Address: 34 Washington Street, Wellesley Hills, MA 02481