

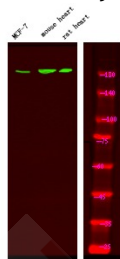
## Anti-Phospho-HER4/ERBB4 (Tyr1242) Polyclonal Antibody

## Product Details

Ig Type:	IgG
Reactivity:	Human,Mouse,Rat
Conjugation:	Unconjugated
Molecular Weight:	Theoretical: 180 kDa.
Purification:	Antibodies were produced by immunizing rabbits with synthetic phosphopeptide and KLH conjugates. Antibodies were purified by affinity-chromatography using epitope-specific phosphopeptide. Non-phospho specific antibodies were removed by chromatography using non-phosphopeptide.

## Applications

Verified Activity: 1. Western Blot analysis of lysates of MCF-7 cell, mouse heart and rat heart, using primary antibody at 1:1000 dilution.



Application:	WB
Recommended	WB: 1:1000

## Properties

Stability & Storage:	Store at -20°C or -80°C for 12 months. Avoid repeated freeze-thaw cycles.
Shipping:	Shipping with blue ice.

## Antigen Details

Immunogen:	A synthesized phosphopeptide: human HER4 around the phosphorylation site of Tyr1242
Antigen Species:	human
Uniprot ID:	Q15303
Synonyms:	p-HER4/ERBB4 (Y1242);HER4/ERBB4 (p-Y1242);HER4/ERBB4 (p-Tyr1242);p-HER4/ERBB4 (Tyr1242)

**Inhibitor · Natural Compounds · Compound Libraries · Recombinant Proteins**

This product is for Research Use Only. Not for Human or Veterinary or Therapeutic Use

Tel:781-999-4286 E\_mail:info@targetmol.com Address:34 Washington Street,Wellesley Hills,MA 02481