

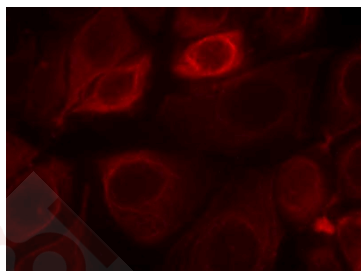
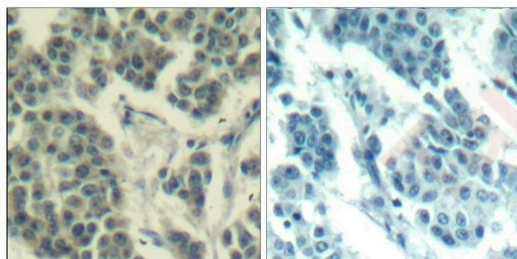
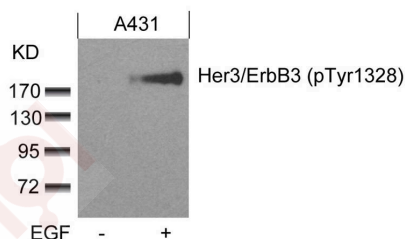
Anti-Phospho-HER3/ERBB3 (Tyr1328) Polyclonal Antibody

Product Details

Ig Type:	IgG
Reactivity:	Human,Mouse,Rat
Conjugation:	Unconjugated
Purification:	Antibodies were produced by immunizing rabbits with synthetic phosphopeptide and KLH conjugates. Antibodies were purified by affinity-chromatography using epitope-specific phosphopeptide. Non-phospho specific antibodies were removed by chromatography using non-phosphopeptide.

Applications

- Verified Activity:
- Western blot analysis of extracts from A431 cells untreated or treated with EGF using Her3/ErbB3 (phospho-Tyr1328) Antibody TMAC-01810.
 - Immunohistochemical analysis of paraffin-embedded human breast carcinoma tissue using Her3/ErbB3 (Phospho-Tyr1328) Antibody TMAC-01810 (left) or the same antibody preincubated with blocking peptide (right).
 - Immunofluorescence staining of methanol-fixed MCF7 cells using Her3/ErbB3 (phospho-Tyr1328) Antibody TMAC-01810.



Application: IF,IHC,WB

A DRUG SCREENING EXPERT

Properties

Stability & Storage: Store at 2°C-8°C for 1 month. Store at -20°C or -80°C for 12 months. Avoid repeated freeze-thaw cycles.

Shipping: Shipping with blue ice.

Antigen Details

Immunogen: Peptide sequence around phosphorylation site of tyrosine 1328 (P-D-Y(p)-W-H) derived from Human Her3/ErbB3

Antigen Species: Human

Uniprot ID: P21860

Synonyms: HER3/ERBB3 (p-Tyr1328);p-HER3/ERBB3 (Tyr1328);p-HER3/ERBB3 (Y1328);HER3/ERBB3 (p-Y1328)

Research Background

Binds and is activated by neuregulins and NTAk.

Inhibitor · Natural Compounds · Compound Libraries · Recombinant Proteins

This product is for Research Use Only · Not for Human or Veterinary or Therapeutic Use

Tel:781-999-4286 E_mail:info@targetmol.com Address:34 Washington Street,Wellesley Hills,MA 02481